

按钮指示装置 Pilot Devices

- 指示灯 Pilot Lights
- 按钮 Pushbuttons
- 信号塔 Signal Towers

1SXF150002C2907 01-2007

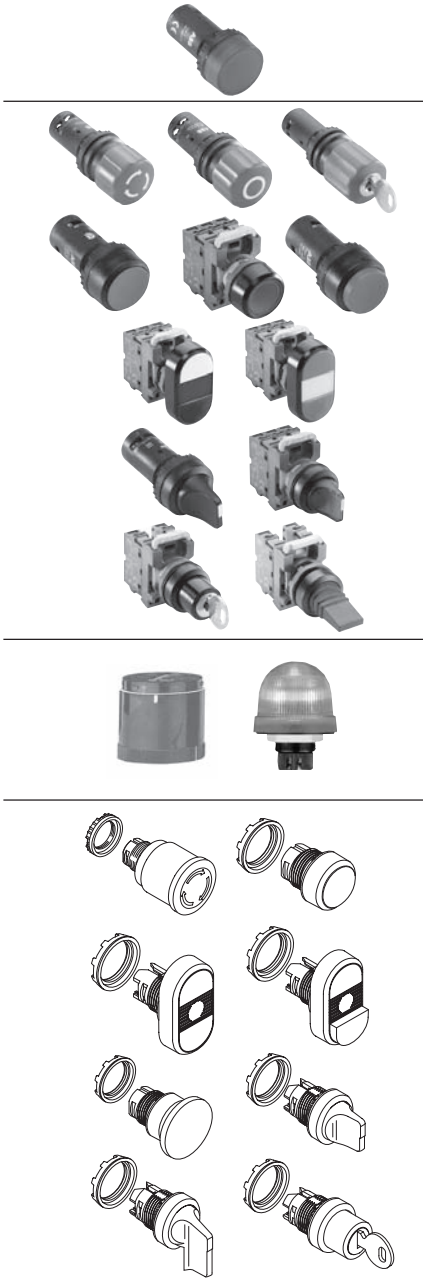
工控产品



ABB

ABB 按钮指示装置 Pilot Devices

目 录	Content	页 page
指示灯	Pilot Lights	1/1
按钮	Pushbuttons	2
急停按钮	Emergency Stop Pushbuttons	2/1
– 扭动释放型	– Twist Release	
– 拉出释放型	– Pull Release	
– 钥匙释放型	– Key Release	
按钮	Pushbuttons	2/2
– 平钮 (复位型 / 自锁型)	– Flush Buttons (Momentary / Maintained)	
– 凸钮 (复位型 / 自锁型)	– Extended Buttons (Momentary / Maintained)	
双头按钮	Double Pushbuttons	2/3
– 平钮	– Flush Buttons	
选择开关	Selector Switches	
– 短手柄操作	– Short Handle	2/4
钥匙选择开关	Key-operated Selector Switches	2/6
拨动开关	Toggle Switches	2/7
信号塔	Signal Towers	3
信号塔 (K70)	Signal Towers (K70)	3/1
信号灯 (KSB)	Signal Beacons (KSB)	3/4
组件	Accessories	4
操作头部	Operators	
– 急停按钮	– Emergency Stop Pushbuttons	4/1
– 按钮	– Pushbuttons	4/2
– 双头按钮	– Double Pushbuttons	4/3
– 蘑菇型按钮	– Mushroom Pushbuttons	4/5
– 选择开关	– Selector Switches	4/6
– 钥匙选择开关	– Key-Operated Selector Switches	4/9
触点组件、灯座及基座	Contact Blocks, Lamp Blocks & Holders	4/10
灯泡、安装工具、标识罩及金属前圈	Bulbs, Mounting Tools, Text Cap & Metal Bezel	4/11
塑料按钮盒	Plastic Enclosure	4/12
标牌	Legend Plates	4/13
技术数据	Technical Data	5/1
尺寸图	Dimensions	6/1
其它	Miscellaneous	7
颜色选择	Colour Selection	7/1
选型指引	Explanation of Type Designation	7/2



指示灯 Pilot Lights



型号 Type	额定电压 Rated Voltage	订货代号 Order Code	重量 Weight (kg)
------------	-----------------------	--------------------	-------------------

LED

C L-506■	6.3 V DC	1SFA 619 402 R506□	0.023
C L-501■	12 V DC	1SFA 619 402 R501□	0.023
C L-502■	24 V AC / DC	1SFA 619 402 R502□	0.023
C L-504■	48 V AC / DC	1SFA 619 402 R504□	0.023
C L-505■	60 V AC / DC	1SFA 619 402 R505□	0.023
C L-513■	110 - 130 V AC	1SFA 619 402 R513□	0.023
C L-515■	110 - 130 V DC	1SFA 619 402 R515□	0.023
C L-520■	220 V DC	1SFA 619 402 R520□	0.023
C L-523■	230 V AC	1SFA 619 402 R523□	0.023
C L-530■	380 V AC	1SFA 619 402 R530□	0.023
C L-541■	415 V AC	1SFA 619 402 R541□	0.023

不带灯泡型 Without Bulbs

交 / 直流电源功率不高于3W，
可加LED标识罩 (散光透镜) 以达到最佳效果

AC / DC supply, max 3 W.
With LED add text cap (light diffusing lens) for best light.

C L-100■		1SFA 619 402 R100□	0.017
----------	--	--------------------	-------

* C系列指示灯应使用功率不高于3W的白炽灯泡，LED或氖灯泡。

* C系列指示装置的订货单元以10个为一组。

颜色代码表

颜色 Color	型号 (■)	订货代号 (□)
红 Red	R	1
绿 Green	G	2
黄 Yellow	Y	3
蓝 Blue	L	4
白 White	W	5
透明 ¹⁾ Clear ¹⁾	C	8

¹⁾ 只适用于不带灯泡型
Only apply for without Bulbs

急停按钮 Emergency Stop Pushbuttons

型号 Type	直径 Diameter (mm)	触点组件 Contact Blocks NO NC	颜色 Colour	订货代号 Order Code	重量 Weight (kg)
------------	---------------------	---------------------------------	--------------	--------------------	-------------------

扭动释放型 (不带灯型) Twist Release (Non-illuminated)

C E3T-10 ■-10	30	1 -		1SFA 619 500 R101 <input type="checkbox"/>	0.032
C E3T-10 ■-01		- 1		1SFA 619 500 R104 <input type="checkbox"/>	0.032
C E3T-10 ■-20		2 -		1SFA 619 500 R102 <input type="checkbox"/>	0.032
C E3T-10 ■-02		- 2		1SFA 619 500 R105 <input type="checkbox"/>	0.032
C E3T-10 ■-11		1 1		1SFA 619 500 R107 <input type="checkbox"/>	0.032

C E4T-10 ■-10	40	1 -		1SFA 619 550 R101 <input type="checkbox"/>	0.036
C E4T-10 ■-01		- 1		1SFA 619 550 R104 <input type="checkbox"/>	0.036
C E4T-10 ■-20		2 -		1SFA 619 550 R102 <input type="checkbox"/>	0.036
C E4T-10 ■-02		- 2		1SFA 619 550 R105 <input type="checkbox"/>	0.036
C E4T-10 ■-11		1 1		1SFA 619 550 R107 <input type="checkbox"/>	0.036

拉出释放型 (不带灯型) Pull Release (Non-illuminated)

C E3P-10R-10	30	1 -	红 Red	1SFA 619 501 R1011	0.032
C E3P-10R-01		- 1	红 Red	1SFA 619 501 R1041	0.032
C E3P-10R-20		2 -	红 Red	1SFA 619 501 R1021	0.032
C E3P-10R-02		- 2	红 Red	1SFA 619 501 R1051	0.032
C E3P-10R-11		1 1	红 Red	1SFA 619 501 R1071	0.032

C E4P-10R-10	40	1 -	红 Red	1SFA 619 551 R1011	0.036
C E4P-10R-01		- 1	红 Red	1SFA 619 551 R1041	0.036
C E4P-10R-20		2 -	红 Red	1SFA 619 551 R1021	0.036
C E4P-10R-02		- 2	红 Red	1SFA 619 551 R1051	0.036
C E4P-10R-11		1 1	红 Red	1SFA 619 551 R1071	0.036

钥匙释放型 (不带灯型) Key Release (Non-illuminated)

(Key Code 71, Ronis 455)

C E3K1-10R-10	30	1 -	红 Red	1SFA 619 502 R1011	0.060
C E3K1-10R-01		- 1	红 Red	1SFA 619 502 R1041	0.060
C E3K1-10R-20		2 -	红 Red	1SFA 619 502 R1021	0.060
C E3K1-10R-02		- 2	红 Red	1SFA 619 502 R1051	0.060
C E3K1-10R-11		1 1	红 Red	1SFA 619 502 R1071	0.060

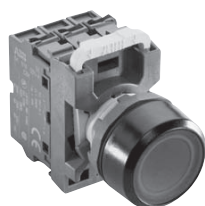
C E4K1-10R-10	40	1 -	红 Red	1SFA 619 552 R1011	0.064
C E4K1-10R-01		- 1	红 Red	1SFA 619 552 R1041	0.064
C E4K1-10R-20		2 -	红 Red	1SFA 619 552 R1021	0.064
C E4K1-10R-02		- 2	红 Red	1SFA 619 552 R1051	0.064
C E4K1-10R-11		1 1	红 Red	1SFA 619 552 R1071	0.064

颜色代码表 (只适用于扭动释放型)

颜色 Color	型号 (■)	订货代号 (□)
红 Red	R	1
绿 Green	G	2
黄 Yellow	Y	3
黑 Black	B	6



按钮 Pushbuttons



颜色代码表

颜色 Color	型号 (■)	订货代号 (□)
红 Red	R	1
绿 Green	G	2
黄 Yellow	Y	3
蓝 Blue	L	4
白 White	W	5
黑 Black	B	6
透明 ¹⁾ Clear ¹⁾	C	8

¹⁾ 只适用于带灯泡型
Only for illuminated

型号 ¹⁾ Type ¹⁾	触点组件 Contact Blocks NO NC	订货代号 ¹⁾ Order Code ¹⁾	重量 Weight (kg)
--	---------------------------------	--	-------------------

平钮 Flush Buttons

复位型 Momentary

不带灯型 Non-illuminated

C P1-10 ■-10	1 -	1SFA 619 100 R101 □	0.018
C P1-10 ■-01	- 1	1SFA 619 100 R104 □	0.018
C P1-10 ■-11	1 1	1SFA 619 100 R107 □	0.022
C P1-10 ■-20	2 -	1SFA 619 100 R102 □	0.022
C P1-10 ■-02	- 2	1SFA 619 100 R105 □	0.022

带灯型 Illuminated

M P1-42 ■-10	1 -	1SFA 611 100 R421 □	0.049
M P1-42 ■-01	- 1	1SFA 611 100 R424 □	0.049
M P1-42 ■-11	1 1	1SFA 611 100 R427 □	0.060

自锁型 Maintained

不带灯型 Non-illuminated

C P2-10 ■-10	1 -	1SFA 619 101 R101 □	0.018
C P2-10 ■-01	- 1	1SFA 619 101 R104 □	0.018
C P2-10 ■-11	1 1	1SFA 619 101 R107 □	0.022
C P2-10 ■-20	2 -	1SFA 619 101 R102 □	0.022
C P2-10 ■-02	- 2	1SFA 619 101 R105 □	0.022

带灯型 Illuminated

M P2-42 ■-10	1 -	1SFA 611 101 R421 □	0.049
M P2-42 ■-01	- 1	1SFA 611 101 R424 □	0.049
M P2-42 ■-11	1 1	1SFA 611 101 R427 □	0.060

凸钮 Extended Buttons

复位型 Momentary

不带灯型 Non-illuminated

C P3-10 ■-10	1 -	1SFA 619 102 R101 □	0.018
C P3-10 ■-01	- 1	1SFA 619 102 R104 □	0.018
C P3-10 ■-11	1 1	1SFA 619 102 R107 □	0.022
C P3-10 ■-20	2 -	1SFA 619 102 R102 □	0.022
C P3-10 ■-02	- 2	1SFA 619 102 R105 □	0.022

带灯型 Illuminated

M P3-42 ■-10	1 -	1SFA 611 102 R421 □	0.049
M P3-42 ■-01	- 1	1SFA 611 102 R424 □	0.049
M P3-42 ■-11	1 1	1SFA 611 102 R427 □	0.060

自锁型 Maintained

不带灯型 Non-illuminated

C P4-10 ■-10	1 -	1SFA 619 103 R101 □	0.018
C P4-10 ■-01	- 1	1SFA 619 103 R104 □	0.018
C P4-10 ■-11	1 1	1SFA 619 103 R107 □	0.022
C P4-10 ■-20	2 -	1SFA 619 103 R102 □	0.022
C P4-10 ■-02	- 2	1SFA 619 103 R105 □	0.022

带灯型 Illuminated

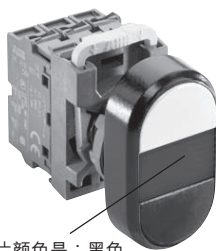
M P4-42 ■-10	1 -	1SFA 611 103 R421 □	0.049
M P4-42 ■-01	- 1	1SFA 611 103 R424 □	0.049
M P4-42 ■-11	1 1	1SFA 611 103 R427 □	0.060

带灯型按钮的说明：

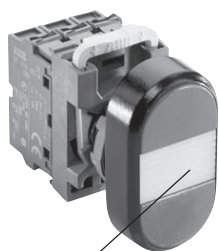
- ¹⁾ 中间位置无触点组件
- ²⁾ 由操作头部、基座、触点组件及灯座组成
- ³⁾ 若需分开订货，请参见第4/1-10页
- ⁴⁾ 灯泡订货，请参见第4/11页

双头按钮 – 平钮

Double Pushbuttons – Flush Buttons



镜片颜色是：黑色
Lens color : black



镜片颜色：
红 Red
绿 Green
黄 Yellow
透明 Clear

型号 Type	触点组件 Contact Blocks		上方按钮 Upper button		下方按钮 Lower button		订货代号 Order Code	重量 Weight (kg)
	NO	NC	颜色 Colour	标识 Text	颜色 Colour	标识 Text		

不带灯型 Non-illuminated

M PD1-21B-11	1	1	绿 Green	无标识	红 Red	无标识	1SFA 611 130 R2176	0.047
M PD2-21B-11	1	1		I		O	1SFA 611 131 R2176	0.047
M PD3-21B-11	1	1		ON		OFF	1SFA 611 132 R2176	0.047
M PD4-21B-11	1	1		START		STOP	1SFA 611 133 R2176	0.047
M PD5-21B-11	1	1	白 White	无标识	黑 Black	无标识	1SFA 611 134 R2176	0.047
M PD6-21B-11	1	1		I		O	1SFA 611 135 R2176	0.047
M PD7-21B-11	1	1		ON		OFF	1SFA 611 136 R2176	0.047
M PD8-21B-11	1	1		START		STOP	1SFA 611 137 R2176	0.047

带灯型 Illuminated

红色镜片 Red lens

M PD1-22R-11	1	1	绿 Green	无标识	红 Red	无标识	1SFA 611 130 R2271	0.062
M PD2-22R-11	1	1		I		O	1SFA 611 131 R2271	0.062
M PD3-22R-11	1	1		ON		OFF	1SFA 611 132 R2271	0.062
M PD4-22R-11	1	1		START		STOP	1SFA 611 133 R2271	0.062
M PD5-22R-11	1	1	白 White	无标识	黑 Black	无标识	1SFA 611 134 R2271	0.062
M PD6-22R-11	1	1		I		O	1SFA 611 135 R2271	0.062
M PD7-22R-11	1	1		ON		OFF	1SFA 611 136 R2271	0.062
M PD8-22R-11	1	1		START		STOP	1SFA 611 137 R2271	0.062

绿色镜片 Green lens

M PD1-22G-11	1	1	绿 Green	无标识	红 Red	无标识	1SFA 611 130 R2272	0.062
M PD2-22G-11	1	1		I		O	1SFA 611 131 R2272	0.062
M PD3-22G-11	1	1		ON		OFF	1SFA 611 132 R2272	0.062
M PD4-22G-11	1	1		START		STOP	1SFA 611 133 R2272	0.062
M PD5-22G-11	1	1	白 White	无标识	黑 Black	无标识	1SFA 611 134 R2272	0.062
M PD6-22G-11	1	1		I		O	1SFA 611 135 R2272	0.062
M PD7-22G-11	1	1		ON		OFF	1SFA 611 136 R2272	0.062
M PD8-22G-11	1	1		START		STOP	1SFA 611 137 R2272	0.062

黄色镜片 Yellow lens

M PD1-22Y-11	1	1	绿 Green	无标识	红 Red	无标识	1SFA 611 130 R2273	0.062
M PD2-22Y-11	1	1		I		O	1SFA 611 131 R2273	0.062
M PD3-22Y-11	1	1		ON		OFF	1SFA 611 132 R2273	0.062
M PD4-22Y-11	1	1		START		STOP	1SFA 611 133 R2273	0.062
M PD5-22Y-11	1	1	白 White	无标识	黑 Black	无标识	1SFA 611 134 R2273	0.062
M PD6-22Y-11	1	1		I		O	1SFA 611 135 R2273	0.062
M PD7-22Y-11	1	1		ON		OFF	1SFA 611 136 R2273	0.062
M PD8-22Y-11	1	1		START		STOP	1SFA 611 137 R2273	0.062

透明镜片 Clear lens

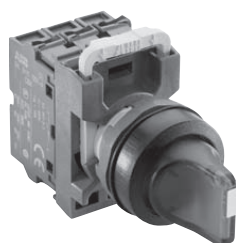
M PD1-22C-11	1	1	绿 Green	无标识	红 Red	无标识	1SFA 611 130 R2278	0.062
M PD2-22C-11	1	1		I		O	1SFA 611 131 R2278	0.062
M PD3-22C-11	1	1		ON		OFF	1SFA 611 132 R2278	0.062
M PD4-22C-11	1	1		START		STOP	1SFA 611 133 R2278	0.062
M PD5-22C-11	1	1	白 White	无标识	黑 Black	无标识	1SFA 611 134 R2278	0.062
M PD6-22C-11	1	1		I		O	1SFA 611 135 R2278	0.062
M PD7-22C-11	1	1		ON		OFF	1SFA 611 136 R2278	0.062
M PD8-22C-11	1	1		START		STOP	1SFA 611 137 R2278	0.062

按钮的说明：

- 中间位置无触点组件
- 带灯型由操作头部、基座、触点组件及灯座组成 (不带灯型则由操作头部、基座及触点组件组成)
- 若需分开订货, 请参见第4/1-10页
- 灯泡订货, 请参见第4/11页

选择开关 – 短手柄操作

Selector Switches – Short Handle



型号 Type	触点组件 Contact Blocks		订货代号 Order Code	重量 Weight (kg)
	NO	NC		

二位置 Two-position

自锁型 Maintained

不带灯型 Non-illuminated



C 2SS1-10 ■-10	1	-	1SFA 619 200 R101 □	0.020
C 2SS1-10 ■-01	-	1	1SFA 619 200 R104 □	0.020
C 2SS1-10 ■-11	1	1	1SFA 619 200 R107 □	0.024
C 2SS1-10 ■-20	2	-	1SFA 619 200 R102 □	0.024
C 2SS1-10 ■-02	-	2	1SFA 619 200 R105 □	0.024



C 2SS2-10 ■-10	1	-	1SFA 619 201 R101 □	0.020
C 2SS2-10 ■-01	-	1	1SFA 619 201 R104 □	0.020
C 2SS2-10 ■-11	1	1	1SFA 619 201 R107 □	0.024
C 2SS2-10 ■-20	2	-	1SFA 619 201 R102 □	0.024
C 2SS2-10 ■-02	-	2	1SFA 619 201 R105 □	0.024

带灯型 Illuminated



M 2SS1-42 ■-10	1	-	1SFA 611 200 R421 □	0.071
M 2SS1-42 ■-01	-	1	1SFA 611 200 R424 □	0.071
M 2SS1-42 ■-11	1	1	1SFA 611 200 R427 □	0.071
M 2SS1-42 ■-20	2	-	1SFA 611 200 R422 □	0.071
M 2SS1-42 ■-02	-	2	1SFA 611 200 R425 □	0.071



M 2SS2-42 ■-10	1	-	1SFA 611 201 R421 □	0.071
M 2SS2-42 ■-01	-	1	1SFA 611 201 R424 □	0.071
M 2SS2-42 ■-11	1	1	1SFA 611 201 R427 □	0.071
M 2SS2-42 ■-20	2	-	1SFA 611 201 R422 □	0.071
M 2SS2-42 ■-02	-	2	1SFA 611 201 R425 □	0.071

复位型 Momentary

不带灯型 Non-illuminated



C 2SS3-10 ■-10	1	-	1SFA 619 202 R101 □	0.020
C 2SS3-10 ■-01	-	1	1SFA 619 202 R104 □	0.020
C 2SS3-10 ■-11	1	1	1SFA 619 202 R107 □	0.024
C 2SS3-10 ■-20	2	-	1SFA 619 202 R102 □	0.024
C 2SS3-10 ■-02	-	2	1SFA 619 202 R105 □	0.024

(由C至B弹簧复位 from C to B)

带灯型 Illuminated



M 2SS3-42 ■-10	1	-	1SFA 611 202 R421 □	0.071
M 2SS3-42 ■-01	-	1	1SFA 611 202 R424 □	0.071
M 2SS3-42 ■-11	1	1	1SFA 611 202 R427 □	0.071
M 2SS3-42 ■-20	2	-	1SFA 611 202 R422 □	0.071
M 2SS3-42 ■-02	-	2	1SFA 611 202 R425 □	0.071

(由C至B弹簧复位 from C to B)

手柄颜色代码表

颜色 Color	型号 (■)	订货代号 (□)
红 Red	R	1
绿* Green*	G	2
黄* Yellow*	Y	3
蓝* Blue*	L	4
黑 Black	B	6
透明* Clear*	C	8

* 不适用于不带灯型
Not apply for Non-illuminated

带灯型选择开关的说明：

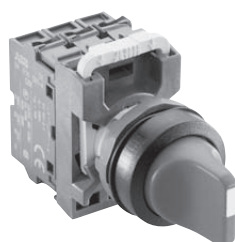
- 中间位置无触点组件
- 由操作头部、基座、触点组件、灯座组成
- 若需分开订货，请参见第4/1-10页
- 灯泡订货，请参见第4/11页

选择开关 – 短手柄操作

Selector Switches – Short Handle

2

按钮 Pushbuttons



手柄颜色代码表

颜色 Color	型号 (■)	订货代号 (□)
红 Red	R	1
绿 Green	G	2
黄 Yellow	Y	3
蓝 Blue	L	4
黑 Black	B	6
透明 Clear	C	8

型号 Type	触点组件 Contact Blocks		订货代号 Order Code	重量 Weight (kg)
	NO	NC		

三位置 Three-position

自锁型 Maintained

不带灯型 Non-illuminated



C 3SS1-10 ■-20	2	-
C 3SS1-10 ■-02	-	2
C 3SS1-10 ■-11	1	1

1SFA 611 210 R102 □	0.024
1SFA 611 210 R105 □	0.024
1SFA 611 210 R107 □	0.024

带灯型 Illuminated



M 3SS1-42 ■-11	1	1
M 3SS1-42 ■-20	2	-
M 3SS1-42 ■-02	-	2

1SFA 611 210 R427 □	0.071
1SFA 611 210 R422 □	0.071
1SFA 611 210 R425 □	0.071

复位型 Momentary

不带灯型 Non-illuminated



C 3SS2-10 ■-11	1	1
C 3SS2-10 ■-20	2	-
C 3SS2-10 ■-02	-	2

(由A至B和C至B弹簧复位
from A to B and C to B)

1SFA 619 211 R107 □	0.024
1SFA 619 211 R102 □	0.024
1SFA 619 211 R105 □	0.024



C 3SS3-10 ■-11	1	1
C 3SS3-10 ■-20	2	-
C 3SS3-10 ■-02	-	2

(由C至B弹簧复位
from C to B)

1SFA 619 212 R107 □	0.024
1SFA 619 212 R102 □	0.024
1SFA 619 212 R105 □	0.024



C 3SS7-10 ■-11	1	1
C 3SS7-10 ■-20	2	-
C 3SS7-10 ■-02	-	2

(由A至B弹簧复位
from A to B)

1SFA 619 216 R107 □	0.024
1SFA 619 216 R102 □	0.024
1SFA 619 216 R105 □	0.024

带灯型 Illuminated



M 3SS2-42 ■-11	1	1
M 3SS2-42 ■-20	2	-
M 3SS2-42 ■-02	-	2

1SFA 611 211 R427 □	0.071
1SFA 611 211 R422 □	0.071
1SFA 611 211 R425 □	0.071



M 3SS3-42 ■-11	1	1
M 3SS3-42 ■-20	1	1
M 3SS3-42 ■-02	1	1

1SFA 611 212 R427 □	0.071
1SFA 611 212 R422 □	0.071
1SFA 611 212 R425 □	0.071



M 3SS7-42 ■-11	1	1
M 3SS7-42 ■-20	1	1
M 3SS7-42 ■-02	1	1

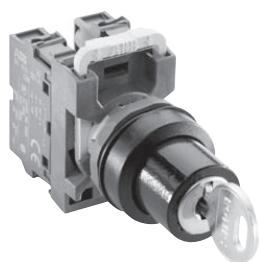
1SFA 611 216 R427 □	0.071
1SFA 611 216 R422 □	0.071
1SFA 611 216 R425 □	0.071

带灯型选择开关的说明：

- 中间位置无触点组件
- 由操作头部、基座、触头组件、灯座组成
- 若需分开订货，请参见第4/1-10页
- 灯泡订货，请参见第4/11页

钥匙选择开关



Key-operated Selector Switches



型号 Type	触点组件 Contact Blocks		取出钥匙位置 The key can be removed	订货代号 Order Code	重量 Weight (kg)
	NO	NC			

二位置 Two-position

自锁型 Maintained



 M 2SSK1-40■-10 ²⁾	1	—	二位置均可 In both positions	1SFA 611 280 R401 ■ ²⁾	0.069
 M 2SSK2-40■-10 ²⁾	1	—	仅在B位置 In position B only	1SFA 611 281 R401 ■ ²⁾	0.069

复位型 Momentary

 M 2SSK3-40■-10 ²⁾ (由C至B弹簧复位 from C to B)	1	—	仅在B位置 In position B only	1SFA 611 282 R401 ■ ²⁾	0.069
--	---	---	-----------------------------	--	-------

三位置 Three-position

自锁型 Maintained

 M 3SSK1-40■-20 ²⁾	2	—	三位置均可 In all positions	1SFA 616 283 R402 ■ ¹⁾	0.069
 M 3SSK2-40■-20 ²⁾	2	—	仅在B位置 In position B only	1SFA 616 284 R402 ■ ²⁾	0.069

复位型 Momentary

 M 3SSK3-40■-20 ²⁾ (A至B、C至B弹簧复位 from A to B and C to B)	2	—	仅在B位置 In position B only	1SFA 616 285 R402 ■ ²⁾	0.069
 M 3SSK4-40■-20 ²⁾ (由C至B弹簧复位 from C to B)	2	—	仅在A位置 In position A only	1SFA 616 286 R402 ■ ²⁾	0.069
 M 3SSK5-40■-20 ²⁾ (由C至B弹簧复位 from C to B)	2	—	三位置均可 In all positions	1SFA 616 287 R402 ■ ²⁾	0.069

²⁾ 钥匙代码 Key codes

匙号 Key code	订货号 Order Code
71 (标准 standard)	■ = 1

钥匙选择开关的说明：

- ¹⁾ 中间位置无触点组件
- ²⁾ 由操作头部、基座、触头组件组成
- ³⁾ 若需分开订货，请参见第4/1-10页

拨动开关 Toggle Switches

型号 Type	触点组件 Contact Blocks NO NC	前圈 Bezel	订货代号 Order Code	重量 Weight (kg)
------------	---------------------------------	-------------	--------------------	----------------------

二位置 Two-position

自锁型 Maintained

	M TS1-40B-10	1	-	黑色塑料 Black plastic	1SFA 611 300 R4016	0.021
	M TS1-60B-10	1	-	金属 Metal	1SFA 611 300 R6016	0.021

三位置 Three-position

自锁型 Maintained

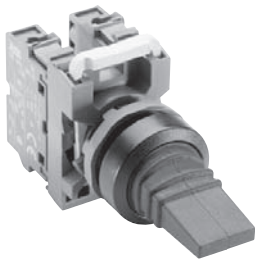
	M TS3-40B-20	2	-	黑色塑料 Black plastic	1SFA 611 302 R4026	0.021
	M TS3-60B-20	2	-	金属 Metal	1SFA 611 302 R6026	0.021

复位型 Momentary

	M TS2-40B-20	2	-	黑色塑料 Black plastic	1SFA 611 301 R4026	0.021
	M TS2-60B-20 (由A至B, C至B 弹簧复位 from A to B and C to B)	2	-	金属 Metal	1SFA 611 301 R6026	0.021

开关的说明：

- ¹⁾ 中间位置无触点组件
- ²⁾ 由操作头部、基座、触点组成
- ³⁾ 若需分开订货，请参见4/1-10页



信号塔 (K70) Signal Towers

简单快速的装配

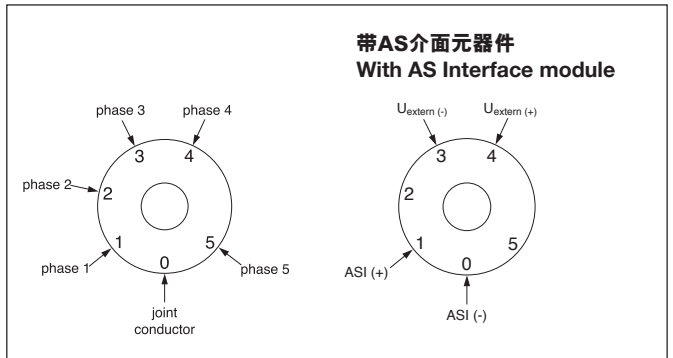
每个K70模组均有整体式端子系统和插入安装机构。每个模组均可通过对齐白色标志，旋转一下而正确固定在一起 (见图示)。



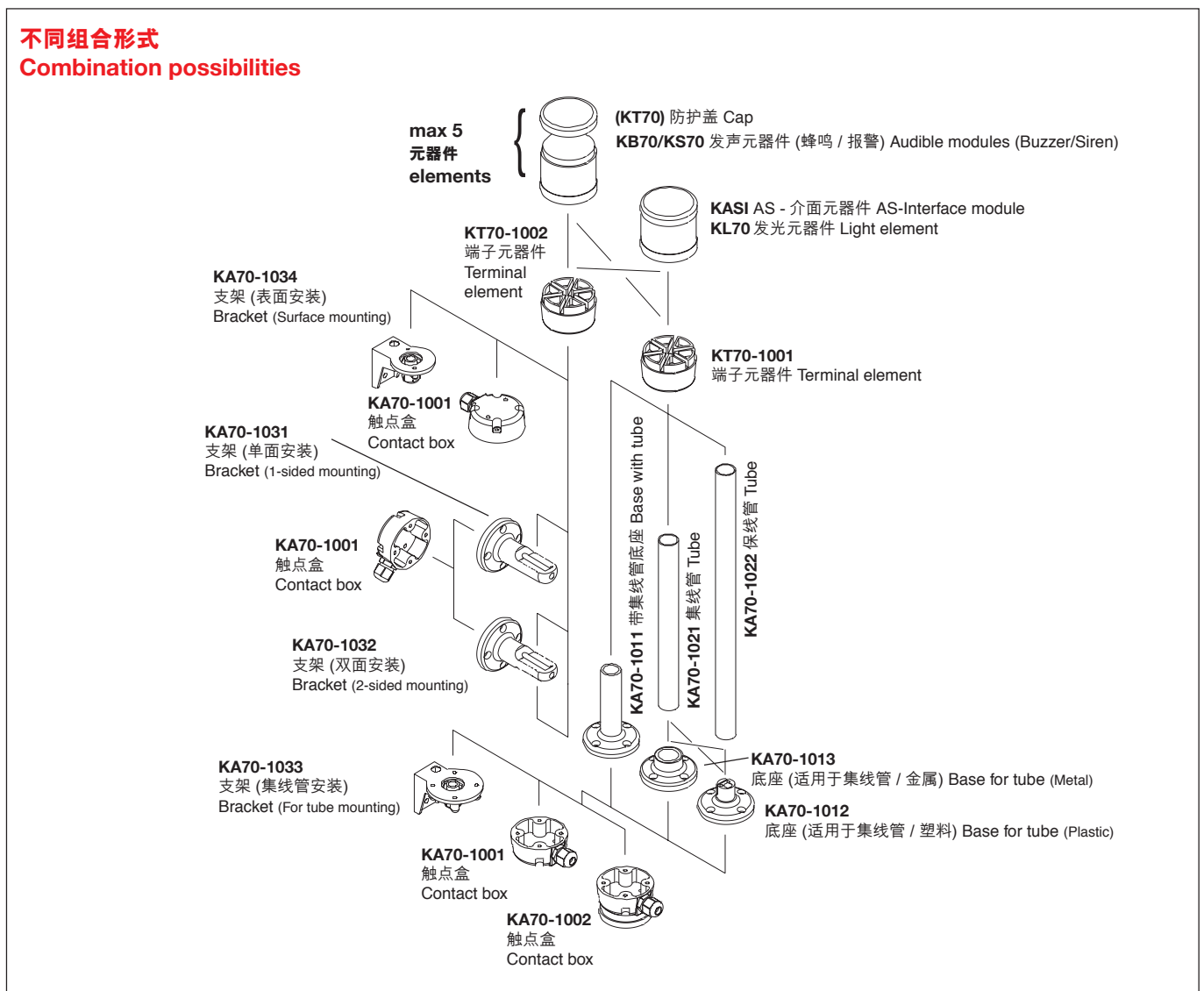
Simple fitting with quick fix system

Each K 70 module is equipped with a bayonet fixing with integral contact system. The modules are fastened together by aligning the corresponding white marks then with a gentle twist they are locked into place (see the figures).

连接图 Connection plans



不同组合形式 Combination possibilities



信号塔 (K70) – 发光元器件

Signal Towers – Light Element



型号 Type	产品说明 Description	额定电压 Rated Voltage	订货代号 Order Code	重量 Weight (kg)
LED				
KL70-305 ■	常亮灯 (不可更换) Permanent light (Not changeable)	24 V AC/DC	1SFA 616 070 R305□	0.10
KL70-306 ■	闪光灯 (频闪) (不可更换) Blinking light (Not changeable)	24 V AC/DC	1SFA 616 070 R306□	0.10
KL70-307 ■	旋转警示灯 (不可更换) Rotating light (Not changeable)	24 V AC/DC	1SFA 616 070 R307□	0.10

闪光灯 (转闪) Flashing Light

KL70-203 ■	带氙管灯 (不可更换) Xenon tube included (Not changeable)	24 V DC	1SFA 616 070 R203□	0.12
KL70-113 ■	带氙管灯 (不可更换) Xenon tube included (Not changeable)	115 V AC	1SFA 616 070 R113□	0.11
KL70-123 ■	带氙管灯 (不可更换) Xenon tube included (Not changeable)	230 V AC	1SFA 616 070 R123□	0.11

不带灯泡型 Without Bulbs

常亮灯 Permanent Light

KL70-401 ■	适用于BA15d灯泡。 (不带灯泡) (Bulb not included)	12-240 V AC/DC	1SFA 616 070 R401□	0.09
------------	--	----------------	--------------------	------

闪光灯 (频闪) Blinking Light

KL70-302 ■	适用于BA15d灯泡。	24 V AC/DC	1SFA 616 070 R302□	0.10
KL70-312 ■	(不带灯泡)	115 V AC/DC	1SFA 616 070 R312□	0.10
KL70-322 ■	(Bulb not included)	230 V AC/DC	1SFA 616 070 R322□	0.10

颜色代码表

颜色 Color	型号 (■)	订货代号 (□)
红 Red	R	1
绿 Green	G	2
黄 Yellow	Y	3
蓝 Blue	L	4
白 ¹⁾ White ¹⁾	W	5
透明 ²⁾ Clear ²⁾	C	8

¹⁾ 只适用于LED Only for LED

²⁾ 只适用于不带灯泡型 Only for without Bulbs

信号塔 (K70) – 附件

Signal Towers – Accessories



型号 Type	产品说明 Description	额定电压 Rated Voltage	订货代号 Order Code	重量 Weight (kg)
灯泡 (常亮灯/闪光灯 - 频闪) Bulb (For Permanent Light / Blinking Light)				
	Bulb Ba 15d 灯泡 42 mm 7W	24 V, 5 W, AC/DC 115 V, 5 W, AC/DC 230 V, 5 W, AC/DC	1SFA 616 923 R1028 1SFA 616 923 R1118 1SFA 616 923 R1148	0.009 0.009 0.009
LED灯泡 LED Bulb (Ba 15d, 40 mA)				
KA4-1021	红 Red	24 V AC/DC	1SFA 616 924 R1021	0.009
KA4-1022	绿 Green		1SFA 616 924 R1022	
KA4-1023	黄 Yellow		1SFA 616 924 R1023	
KA4-1024	蓝 Blue		1SFA 616 924 R1024	
KA4-1025	白 White		1SFA 616 924 R1025	
发声元器件 (蜂鸣器) Audible modules (Buzzer Element)				
KB70-3001	连续或脉冲声响	24 V AC/DC	1SFA 616 071 R3001	0.11
KB70-3101	强度85分贝, 可调节	115 V AC/DC	1SFA 616 071 R3101	0.11
KB70-1201	85 dB, continuous or pulsating tone, adjustable	230 V AC	1SFA 616 071 R1201	0.12
警报器元器件 Siren element				
KS70-1104	多功能, 8种不同的可调声响, 可调节的声响强度100分贝	115 V AC 230 V AC	1SFA 616 073 R1104 1SFA 616 073 R1204	0.13 0.12
KS70-1204	Multi function, 8 diff. tones adjustable, volume adjustable 100 dB	24 V AC/DC	1SFA 616 073 R3004	0.12
KS70-2004	多功能, 7种不同的可调声响, 可调节的声响强度, 远程控制, 100分贝	24 V DC	1SFA 616 073 R2004	0.12
KS70-2004	Multi function, 7 diff. tones adjustable, volume adjustable, remote control 100 dB			
KS70-2002	连续声响, 交替式, 108分贝	24 V DC	1SFA 616 073 R2002	0.15
KS70-2002	Continuous tone alternating 108 dB			
AS-介面元器件 AS-Interface Module				
KASI-4101		18.5 - 31.6 V AC/DC (外部电压 for external)	1SFA 616 079 R4101	0.11
KASI-4102		18.5 - 31.6 V AC/DC	1SFA 616 079 R4102	0.14
端子元器件 Terminal elements				
KT70-1001	适用于集线管安装, 带防护盖 For tube mounting, including cap		1SFA 616 075 R1001	0.15
KT70-1002	适用于支架 / 底座, 带防护盖 For bracket or base, including cap		1SFA 616 075 R1002	0.15
特殊配件 Special parts				
触点盒 Contact box				
KA70-1001	旁出线 Cable exit at side		1SFA 616 077 R1001	0.07
KA70-1002	磁性底座 Magnetic base		1SFA 616 077 R1002	0.31
带集线管底座 Base with tube				
KA70-1011	D=25 mm L=110 mm		1SFA 616 077 R1011	0.06
适用于集线管底座 Base for tube				
KA70-1012	塑料 Plastic, D=25 mm		1SFA 616 077 R1012	0.03
KA70-1013	金属 Metal, D=25 mm		1SFA 616 077 R1013	0.32
集线管, 铝表面阳极化处理 Tube, anodized aluminium				
KA70-1021	D=25 mm L=250 mm		1SFA 616 077 R1021	0.08
KA70-1022	D=25 mm L=400 mm		1SFA 616 077 R1022	0.12
支架 / 托架 Bracket				
KA70-1031	单面安装 1-sided mounting		1SFA 616 077 R1031	0.07
KA70-1032	双面安装 2-sided mounting		1SFA 616 077 R1032	0.07
KA70-1033	集线管安装 For tube mounting		1SFA 616 077 R1033	0.07
KA70-1034	表面安装 For surface mounting		1SFA 616 077 R1034	0.07

信号塔 – 信号灯 (KSB)

Signal Towers – Signal Beacons



型号 Type	产品说明 Description	额定电压 Rated Voltage	订货代号 Order Code	重量 Weight (kg)
------------	---------------------	-----------------------	--------------------	----------------------

LED

KSB-305 ■	常亮灯 (不可更换) Permanent light (Not changeable)	24 V AC/DC	1SFA 616 080 R305 □	0.14
KSB-306 ■	闪光灯 (频闪) (不可更换) Blinking light (Not changeable)	24 V AC/DC	1SFA 616 080 R306 □	0.14
KSB-307 ■	旋转警示灯 (不可更换) Rotating light (Not changeable)	24 V AC/DC	1SFA 616 080 R307 □	0.14

闪光灯 Flashing Light

KSB-203 ■	带氙管 (不可更换) Xenon tube included (Not changeable)	24 V DC	1SFA 616 080 R203 □	0.14
KSB-113 ■	带氙管 (不可更换) Xenon tube included (Not changeable)	115 V AC	1SFA 616 080 R113 □	0.14
KSB-123 ■	带氙管 (不可更换) Xenon tube included (Not changeable)	230 V AC	1SFA 616 080 R123 □	0.14

常亮灯 Permanent Light

KSB-401 ■	适用于BA15d灯泡。 (不带灯泡) (Bulb not included)	12 - 240 V AC/DC	1SFA 616 080 R401 □	0.13
------------------	--	------------------	----------------------------	------

特殊配件 Special Parts

KASB-100	防扭动 Anti-twist device		1SFA 616 087 R1000	0.005
灯泡 – 适用于常亮灯 (最大10W) Bulbs Max 10 W. For permanent light.		Ba15d 灯泡, 52 mm : 12 V, 7 W, AC/DC 24 V, 7 W, AC/DC 115 V, 7 W, AC/DC 220-260 V, 7-10 W, AC/DC	1SFA 616 922 R1018 1SFA 616 922 R1028 1SFA 616 922 R1118 1SFA 616 922 R1148	0.011 0.011 0.011 0.011

颜色代码表

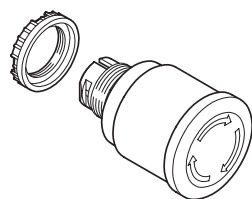
颜色	Color	型号 (■)	订货代号 (□)
红	Red	R	1
绿	Green	G	2
黄	Yellow	Y	3
蓝*	Blue*	L	4
透明*	Clear*	C	8

* 不适用于LED Not for LED

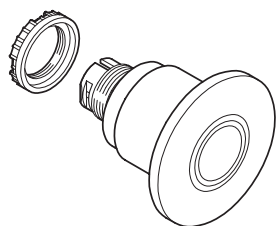


操作头部 – 急停按钮

Operators – Emergency Stop Pushbuttons



Ø40



Ø60

型号 Type	直径 Diameter (mm)	材料 Material	按钮颜色 Button colour	订货代号 Order Code	重量 Weight (kg)
------------	---------------------	----------------	-----------------------	--------------------	-------------------

扭动释放型 Twist Release**不带灯型 Non-illuminated**

M PMT3-10R	40	塑料 plastic	红 Red	1SFA 611 510 R1001	0.041
M PMT4-10R	60	塑料 plastic	红 Red	1SFA 611 513 R1001	0.048

带灯型 Illuminated

M PMT3-11R	40	塑料 plastic	红 Red	1SFA 611 510 R1101	0.041
M PMT4-11R	60	塑料 plastic	红 Red	1SFA 611 513 R1101	0.048

拉出释放型 Pull Release**不带灯型 Non-illuminated**

M PMP3-10R	40	塑料 plastic	红 Red	1SFA 611 511 R1001	0.041
M PMP4-10R	60	塑料 plastic	红 Red	1SFA 611 514 R1001	0.048

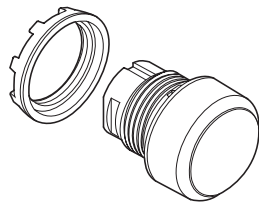
带灯型 Pull Release Illuminated

M PMP3-11R	40	塑料 plastic	红 Red	1SFA 611 511 R1101	0.041
M PMP4-11R	60	塑料 plastic	红 Red	1SFA 611 514 R1101	0.048

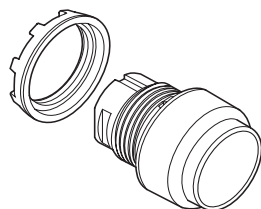
- 註： – 中间位置无触点组件
 – 不带灯型的完整操作元件，必须另订触点组件及基座。
 – 带灯型的完整操作元件，必须另订触点组件、基座、灯座和灯泡。

- Note: – No contact block in the center position
 – Non-illuminated - Contact blocks and holders must be ordered separately
 – Illuminated - Contact blocks, holder, lamp block and bulbs must be ordered separately

操作头部 – 按钮 Operators – Pushbuttons



1SFC151073R001



1SFC151074R001

颜色代码表

颜色 Color	型号 (■)	订货代号 (□)
红 Red	R	1
绿 Green	G	2
黄 Yellow	Y	3
蓝 Blue	L	4
白 White	W	5
黑* Black*	B	6
透明 Clear	C	8

*黑色不适用于带灯型

型号 ¹⁾ Type ¹⁾	订货代号 ¹⁾ Order Code ¹⁾	重量 Weight (kg)
--	--	-------------------

平钮 Flush Buttons

复位型 Momentary

不带灯型 Non-illuminated

M P1-10 ■	1SFA 611 100 R100□	0.016
-----------	--------------------	-------

带灯型 Illuminated

M P1-11 ■	1SFA 611 100 R100□	0.016
-----------	--------------------	-------

自锁型 Maintained¹⁾

不带灯型 Non-illuminated

M P2-10 ■	1SFA 611 101 R100□	0.016
-----------	--------------------	-------

带灯型 Illuminated

M P2-11 ■	1SFA 611 101 R110□	0.016
-----------	--------------------	-------

凸钮 Extended Buttons

复位型 Momentary

不带灯型 Non-illuminated

MP3-10 ■	1SFA 611 102 R100□	0.016
----------	--------------------	-------

带灯型 Illuminated

M P3-11 ■	1SFA 611 102 R110□	0.016
-----------	--------------------	-------

自锁型 Maintained¹⁾

不带灯型 Non-illuminated

M P4-10 ■	1SFA 611 103 R100□	0.016
-----------	--------------------	-------

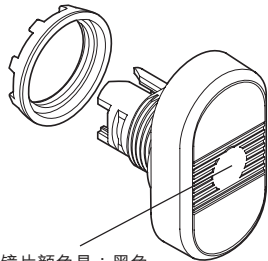
带灯型 Illuminated

M P4-11 ■	1SFA 611 103 R110□	0.016
-----------	--------------------	-------

註： - 中间位置无触点组件
- 不带灯型的完整操作元件，必须另订触点组件及基座。
- 带灯型的完整操作元件，必须另订触点组件、基座、灯座和灯泡。

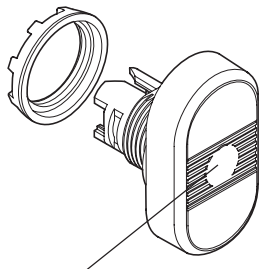
Note: - No contact block in the center position
- Non-illuminated - Contact blocks and holders must be ordered separately
- Illuminated - Contact blocks, holder, lamp block and bulbs must be ordered separately

操作头部 – 双头按钮 Operator – Double Pushbutton



镜片颜色是：黑色
Lens color : black

1SFC151075F0001



镜片颜色 Lens colors
红 Red
绿 Green
黄 Yellow
透明 Clear

1SFC151075F0001

型号 Type	上方按钮 Upper button		下方按钮 Lower button		订货代号 Order Code	重量 Weight (kg)
	颜色 Colour	标识 Text	颜色 Colour	标识 Text		

平钮 Flush Buttons

不带灯型 Non-illuminated

M PD1-11B	绿色 Green	无标识	红色 Red	无标识	1SFA 611 130 R1106	0.025
M PD2-11B				O	1SFA 611 131 R1106	0.025
M PD3-11B		ON		OFF	1SFA 611 132 R1106	0.025
M PD4-11B		START		STOP	1SFA 611 133 R1106	0.025
M PD5-11B	白色 White	无标识	黑色 Black	无标识	1SFA 611 134 R1106	0.025
M PD6-11B				O	1SFA 611 135 R1106	0.025
M PD7-11B		ON		OFF	1SFA 611 136 R1106	0.025
M PD8-11B		START		STOP	1SFA 611 137 R1106	0.025

带灯型 Illuminated

红色镜片 Red lens

M PD1-11R	绿色 Green	无标识	红色 Red	无标识	1SFA 611 130 R1101	0.025
M PD2-11R				O	1SFA 611 131 R1101	0.025
M PD3-11R		ON		OFF	1SFA 611 132 R1101	0.025
M PD4-11R		START		STOP	1SFA 611 133 R1101	0.025
M PD5-11R	白色 White	无标识	黑色 Black	无标识	1SFA 611 134 R1101	0.025
M PD6-11R				O	1SFA 611 135 R1101	0.025
M PD7-11R		ON		OFF	1SFA 611 136 R1101	0.025
M PD8-11R		START		STOP	1SFA 611 137 R1101	0.025

绿色镜片 Green lens

M PD1-11G	绿色 Green	无标识	红色 Red	无标识	1SFA 611 130 R1102	0.025
M PD2-11G				O	1SFA 611 131 R1102	0.025
M PD3-11G		ON		OFF	1SFA 611 132 R1102	0.025
M PD4-11G		START		STOP	1SFA 611 133 R1102	0.025
M PD5-11G	白色 White	无标识	黑色 Black	无标识	1SFA 611 134 R1102	0.025
M PD6-11G				O	1SFA 611 135 R1102	0.025
M PD7-11G		ON		OFF	1SFA 611 136 R1102	0.025
M PD8-11G		START		STOP	1SFA 611 137 R1102	0.025

黄色镜片 Yellow lens

M PD1-11Y	绿色 Green	无标识	红色 Red	无标识	1SFA 611 130 R1103	0.025
M PD2-11Y				O	1SFA 611 131 R1103	0.025
M PD3-11Y		ON		OFF	1SFA 611 132 R1103	0.025
M PD4-11Y		START		STOP	1SFA 611 133 R1103	0.025
M PD5-11Y	白色 White	无标识	黑色 Black	无标识	1SFA 611 134 R1103	0.025
M PD6-11Y				O	1SFA 611 135 R1103	0.025
M PD7-11Y		ON		OFF	1SFA 611 136 R1103	0.025
M PD8-11Y		START		STOP	1SFA 611 137 R1103	0.025

透明镜片 Clear lens

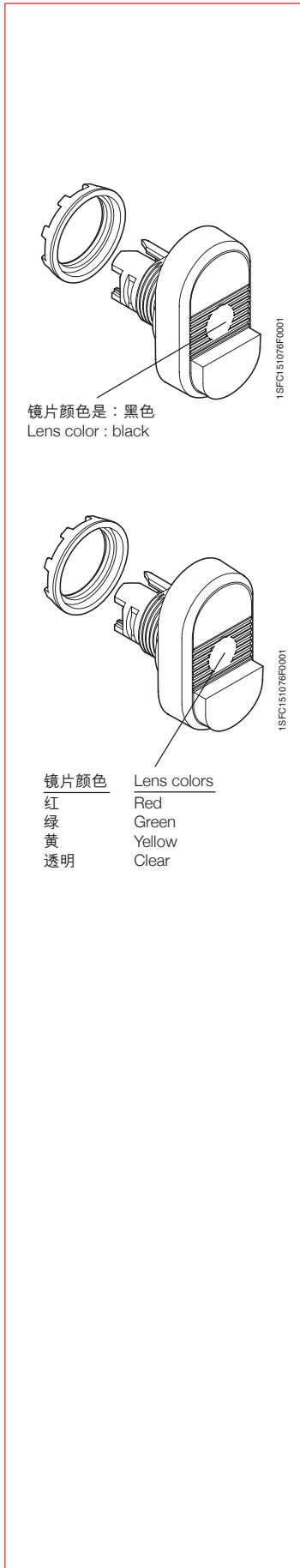
M PD1-11C	绿色 Green	无标识	红色 Red	无标识	1SFA 611 130 R1108	0.025
M PD2-11C				O	1SFA 611 131 R1108	0.025
M PD3-11C		ON		OFF	1SFA 611 132 R1108	0.025
M PD4-11C		START		STOP	1SFA 611 133 R1108	0.025
M PD5-11C	白色 White	无标识	黑色 Black	无标识	1SFA 611 134 R1108	0.025
M PD6-11C				O	1SFA 611 135 R1108	0.025
M PD7-11C		ON		OFF	1SFA 611 136 R1108	0.025
M PD8-11C		START		STOP	1SFA 611 137 R1108	0.025

- 註： - 中间位置无触点组件
- 不带灯型的完整操作元件，必须另订触点组件及基座。
- 带灯型的完整操作元件，必须另订触点组件、基座、灯座和灯泡。

Note: - No contact block in the center position
- Non-illuminated - Contact blocks and holders must be ordered separately
- Illuminated - Contactor blocks, holder, lamp block and blubs must be ordered separately

操作头部 – 双头按钮

Operator – Double Pushbuttons



型号 Type	上方按钮 Upper button		下方按钮 Lower button		订货代号 Order Code	重量 Weight (kg)
	颜色 Colour	标识 Text	颜色 Colour	标识 Text		

凸钮 Extended Buttons

不带灯型 Non-illuminated

M PD12-11B	绿色 Green	无标识	红色 Red	无标识	1SFA 611 141 R1106	0.025
M PD13-11B				O	1SFA 611 142 R1106	0.025
M PD14-11B		ON		OFF	1SFA 611 143 R1106	0.025
M PD15-11B		START		STOP	1SFA 611 144 R1106	0.025
M PD16-11B	白色 White	无标识	黑色 Black	无标识	1SFA 611 145 R1106	0.025
M PD17-11B				O	1SFA 611 146 R1106	0.025
M PD18-11B		ON		OFF	1SFA 611 147 R1106	0.025
M PD19-11B		START		STOP	1SFA 611 148 R1106	0.025

带灯型 Illuminated

红色镜片 Red lens

M PD12-11R	白色 White	无标识	黑色 Black	无标识	1SFA 611 141 R1101	0.025
M PD13-11R				O	1SFA 611 142 R1101	0.025
M PD14-11R		ON		OFF	1SFA 611 143 R1101	0.025
M PD15-11R		START		STOP	1SFA 611 144 R1101	0.025
M PD16-11R	白色 White	无标识	黑色 Black	无标识	1SFA 611 145 R1101	0.025
M PD17-11R				O	1SFA 611 146 R1101	0.025
M PD18-11R		ON		OFF	1SFA 611 147 R1101	0.025
M PD19-11R		START		STOP	1SFA 611 148 R1101	0.025

绿色镜片 Green lens

M PD12-11G	绿色 Green	无标识	红色 Red	无标识	1SFA 611 141 R1102	0.025
M PD13-11G				O	1SFA 611 142 R1102	0.025
M PD14-11G		ON		OFF	1SFA 611 143 R1102	0.025
M PD15-11G		START		STOP	1SFA 611 144 R1102	0.025
M PD16-11G	白色 White	无标识	黑色 Black	无标识	1SFA 611 145 R1102	0.025
M PD17-11G				O	1SFA 611 146 R1102	0.025
M PD18-11G		ON		OFF	1SFA 611 147 R1102	0.025
M PD19-11G		START		STOP	1SFA 611 148 R1102	0.025

黄色镜片 Yellow lens

M PD12-11Y	绿色 Green	无标识	红色 Red	无标识	1SFA 611 141 R1103	0.025
M PD13-11Y				O	1SFA 611 142 R1103	0.025
M PD14-11Y		ON		OFF	1SFA 611 143 R1103	0.025
M PD15-11Y		START		STOP	1SFA 611 144 R1103	0.025
M PD16-11Y	白色 White	无标识	黑色 Black	无标识	1SFA 611 145 R1103	0.025
M PD17-11Y				O	1SFA 611 146 R1103	0.025
M PD18-11Y		ON		OFF	1SFA 611 147 R1103	0.025
M PD19-11Y		START		STOP	1SFA 611 148 R1103	0.025

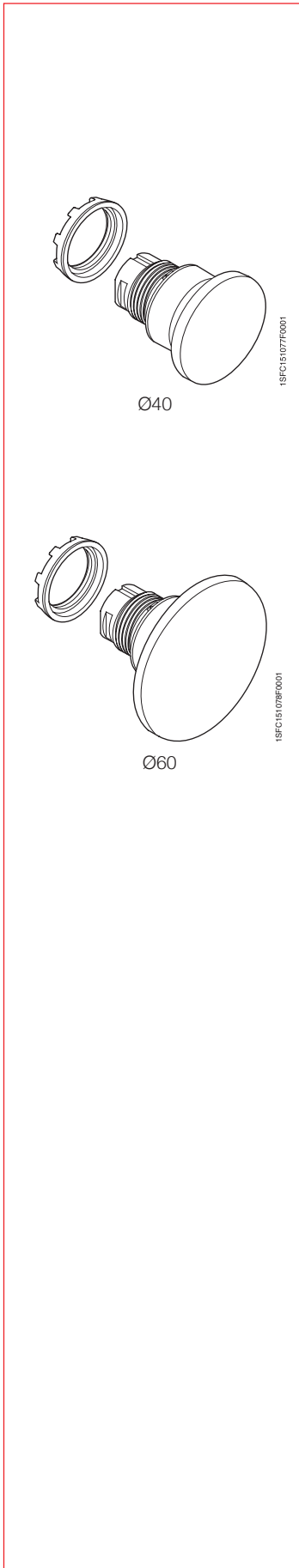
透明镜片 Clear lens

M PD12-11C	绿色 Green	无标识	红色 Red	无标识	1SFA 611 141 R1108	0.025
M PD13-11C				O	1SFA 611 142 R1108	0.025
M PD14-11C		ON		OFF	1SFA 611 143 R1108	0.025
M PD15-11C		START		STOP	1SFA 611 144 R1108	0.025
M PD16-11C	白色 White	无标识	黑色 Black	无标识	1SFA 611 145 R1108	0.025
M PD17-11C				O	1SFA 611 146 R1108	0.025
M PD18-11C		ON		OFF	1SFA 611 147 R1108	0.025
M PD19-11C		START		STOP	1SFA 611 148 R1108	0.025

註： - 中间位置无触点组件
 - 不带灯型的完整操作元件，必须另订触点组件及基座。
 - 带灯型的完整操作元件，必须另订触点组件、基座、灯座和灯泡。

Note: - No contact block in the center position
 - Non-illuminated - Contact blocks and holders must be ordered separately
 - Illuminated - Contactor blocks, holder, lamp block and blubs must be ordered separately

操作头部 – 蘑菇型按钮 Operator – Mushroom Pushbuttons



型号 Type	直径 Diameter (mm)	按钮颜色 Button colour	操作元件 Operator material	订货代号 Order Code	重量 Weight (kg)
------------	---------------------	-----------------------	---------------------------	--------------------	-------------------

复位型 Momentary

不带灯型 Non-illuminated

M PM1-10R	40	红 Red	塑料 Plastic	1SFA 611 124 R1001	0.018
M PM1-10Y		黄 Yellow		1SFA 611 124 R1003	
M PM1-10B		黑 Black		1SFA 611 124 R1006	
M PM2-10R	60	红 Red	塑料 Plastic	1SFA 611 125 R1001	0.020
M PM2-10Y		黄 Yellow		1SFA 611 125 R1003	
M PM2-10B		黑 Black		1SFA 611 125 R1006	

带灯型 Illuminated¹⁾

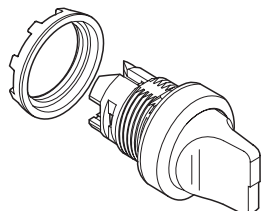
M PM1-11R	40	红 Red	塑料 Plastic	1SFA 611 124 R1101	0.018
M PM1-11Y		黄 Yellow		1SFA 611 124 R1103	
M PM2-11R	60	红 Red	塑料 Plastic	1SFA 611 125 R1101	0.020
M PM2-11Y		黄 Yellow		1SFA 611 125 R1103	

- 註：
- 中间位置无触点组件
 - 不带灯型的完整操作元件，必须另订触点组件及基座。
 - 带灯型的完整操作元件，必须另订触点组件、基座、灯座和灯泡。

- Note:
- No contact block in the center position
 - Non-illuminated - Contact blocks and holders must be ordered separately
 - Illuminated - Contact blocks, holder, lamp block and bulbs must be ordered separately

操作头部 – 选择开关 (短手柄操作)

Operator – Selector Switches (Short Handle)



1SFC151079P0001

型号 Type	订货代号 Order Code	重量 Weight (kg)
------------	--------------------	-------------------

二位置 Two-position

自锁型 Maintained

不带灯型 Non-illuminated



M 2SS1-10 ■

1SFA 611 200 R100 □

0.015



M 2SS2-10 ■

1SFA 611 201 R100 □

0.015

带灯型 Illuminated



M 2SS1-11 ■

1SFA 611 200 R110 □

0.015



M 2SS2-11 ■

1SFA 611 201 R110 □

0.015

复位型 Momentary

不带灯型 Non-illuminated



M 2SS3-10 ■

(由C至B弹簧复位 from C to B)

1SFA 611 202 R100 □

0.015

带灯型 Illuminated



M 2SS3-11 ■

(由C至B弹簧复位 from C to B)

1SFA 611 202 R110 □

0.015

三位置 Three-position

自锁型 Maintained

不带灯型 Non-illuminated



M 3SS1-10 ■

1SFA 611 210 R100 □

0.015

带灯型 Illuminated



M 3SS1-11 ■

1SFA 611 210 R110 □

0.015

复位型 Momentary

不带灯型 Non-illuminated



M 3SS2-10 ■

(由A至B和C至B弹簧复位 from A to B and C to B)

1SFA 611 211 R100 □

0.015



M 3SS3-10 ■

(由C至B弹簧复位 from C to B)

1SFA 611 212 R100 □

0.015



M 3SS7-10 ■

(由A至B弹簧复位 from A to B)

1SFA 611 216 R100 □

0.015

带灯型 Illuminated



M 3SS2-11 ■

(由A至B和C至B弹簧复位 from A to B and C to B)

1SFA 611 211 R110 □

0.015



M 3SS3-11 ■

(由C至B弹簧复位 from C to B)

1SFA 611 212 R110 □

0.015



M 3SS7-11 ■

(由A至B弹簧复位 from A to B)

1SFA 611 216 R110 □

0.015

颜色代码表

不带灯型

颜色 Color	型号 (■)	订货代号 (□)
红 Red	R	1
黑 Black	B	6

带灯型

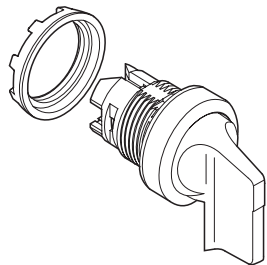
颜色 Color	型号 (■)	订货代号 (□)
红 Red	R	1
绿 Green	G	2
黄 Yellow	Y	3
蓝 Blue	L	4
透明 Clear	C	8

註：— 中间位置无触点组件
— 不带灯型的完整操作元件，必须另订触点组件及基座。
— 带灯型的完整操作元件，必须另订触点组件、基座、灯座和灯泡。

Note: — No contact block in the center position
— Non-illuminated - Contact blocks and holders must be ordered separately
— Illuminated - Contactor blocks, holder, lamp block and blubs must be ordered separately

操作头部 – 选择开关 (长手柄操作)

Operator – Selector Switches (Long Handle)



1SFC151080F0001

型号 Type	订货代号 Order Code	重量 Weight (kg)
------------	--------------------	-------------------

二位置 Two-position

自锁型 Maintained

不带灯型 Non-illuminated



M 2SS4-10 ■

1SFA 611 203 R100 □

0.018



M 2SS5-10 ■

1SFA 611 204 R100 □

0.018

带灯型 Illuminated



M 2SS4-11 ■

1SFA 611 203 R110 □

0.018



M 2SS5-11 ■

1SFA 611 204 R110 □

0.018

复位型 Momentary

不带灯型 Non-illuminated



M 2SS6-10 ■

(由C至B弹簧复位 from C to B)

1SFA 611 205 R100 □

0.018

带灯型 Illuminated



M 2SS6-11 ■

(由C至B弹簧复位 from C to B)

1SFA 611 205 R110 □

0.018

颜色代码表

不带灯型

颜色 Color	型号 (■)	订货代号 (□)
红 Red	R	1
黑 Black	B	6

带灯型

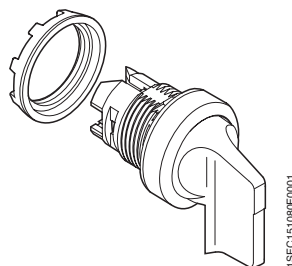
颜色 Color	型号 (■)	订货代号 (□)
红 Red	R	1
绿 Green	G	2
黄 Yellow	Y	3
蓝 Blue	L	4
透明 Clear	C	8

註： - 中间位置无触点组件
 - 不带灯型的完整操作元件，必须另订触点组件及基座。
 - 带灯型的完整操作元件，必须另订触点组件、基座、灯座和灯泡。

Note: - No contact block in the center position
 - Non-illuminated - Contact blocks and holders must be ordered separately
 - Illuminated - Contact blocks, holder, lamp block and bulbs must be ordered separately

操作头部 – 选择开关 (长手柄操作)

Operator – Selector Switches (Long Handle)



型号 Type	订货代号 Order Code	重量 Weight (kg)
------------	--------------------	-------------------

三位置 Three-position

自锁型 Maintained

不带灯型 Non-illuminated



M 3SS4-10 ■

1SFA 611 213 R100 □

0.018

带灯型 Illuminated



M 3SS4-11 ■

1SFA 611 213 R110 □

0.018

复位型 Momentary

不带灯型 Non-illuminated



M 3SS5-10 ■

(由A至B和C至B弹簧复位 from A to B and C to B)

1SFA 611 214 R100 □

0.018



M 3SS6-10 ■

(由C至B弹簧复位 from C to B)

1SFA 611 215 R100 □

0.018



M 3SS8-10 ■

(由A至B弹簧复位 from A to B)

1SFA 611 217 R100 □

0.018

带灯型 Illuminated



M 3SS5-11 ■

(由A至B和C至B弹簧复位 from A to B and C to B)

1SFA 611 214 R110 □

0.018



M 3SS6-11 ■

(由C至B弹簧复位 from C to B)

1SFA 611 215 R110 □

0.018



M 3SS8-11 ■

(由A至B弹簧复位 from A to B)

1SFA 611 217 R110 □

0.018

颜色代码表

不带灯型

颜色 Color	型号	订货代号
红 Red	R (■)	1 (□)
黑 Black	B	6

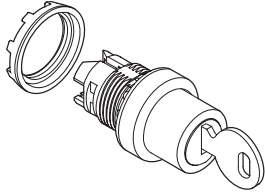
带灯型

颜色 Color	型号	订货代号
红 Red	R (■)	1 (□)
绿 Green	G	2
黄 Yellow	Y	3
蓝 Blue	L	4
透明 Clear	C	8

註： - 中间位置无触点组件
 - 不带灯型的完整操作元件，必须另订触点组件及基座。
 - 带灯型的完整操作元件，必须另订触点组件、基座、灯座和灯泡。

Note: - No contact block in the center position
 - Non-illuminated - Contact blocks and holders must be ordered separately
 - Illuminated - Contactor blocks, holder, lamp block and blubs must be ordered separately

操作头部 – 钥匙选择开关 Operators – Key-operated Selector Switches



1SFC15.008F0001

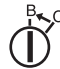
型号 Type	取出钥匙位置 The key can be removed	订货代号 Order Code	重量 Weight (kg)
------------	----------------------------------	--------------------	-------------------

二位置 Two-position

自锁型 Maintained

 M 2SSK1-10 ■ ²⁾	二位置均可 In both positions	1SFA 611 280 R100 ■ ²⁾	0.045
 M 2SSK2-10 ■ ²⁾	仅在B位置 In position B only	1SFA 611 281 R100 ■ ²⁾	0.045

复位型 Momentary

 M2SSK3-10 ■ ²⁾ (由C至B弹簧复位 from C to B)	仅在B位置 In position B only	1SFA 611 282 R100 ■ ²⁾	0.045
---	-----------------------------	--	-------

三位置 Three-position

自锁型 Maintained

 M 3SSK1-10 ■ ²⁾	三位置均可 In all positions	1SFA 611 283 R100 ■ ²⁾	0.045
 M 3SSK2-10 ■ ²⁾	仅在B位置 In position B only	1SFA 611 284 R100 ■ ²⁾	0.045

复位型 Momentary

 M 3SSK3-10 ■ ²⁾ (A至B、C至B弹簧复位 from A to B and C to B)	仅在B位置 In position B only	1SFA 611 285 R100 ■ ²⁾	0.045
 M 3SSK4-10 ■ ³⁾ (由C至B弹簧复位 from C to B)	仅在A位置 In position A only	1SFA 611 286 R100 ■ ³⁾	0.045
 M 3SSK5-10 ■ ²⁾ (由C至B弹簧复位 from C to B)	三位置均可 In all positions	1SFA 611 287 R100 ■ ²⁾	0.045

²⁾ 钥匙代码 Key codes

匙号 Key code	订货号 Order Code
71 (标准 standard)	■ = 1
72	■ = 2
73	■ = 3
其他	可按要求
Other	On request

³⁾ 钥匙代码 Key codes

匙号 Key code	订货号 Order Code
71 (标准 standard)	■ = 1
72	■ = 2

¹⁾ 中间位置无触点组件

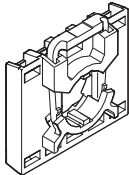
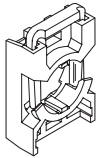
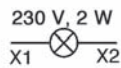
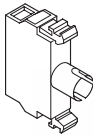
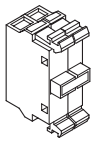
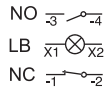
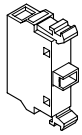
¹⁾ No contact block in the center position

註： - 中间位置无触点组件
- 不带灯型的完整操作元件，必须另订触点组件及基座。
- 带灯型的完整操作元件，必须另订触点组件、基座、灯座和灯泡。

Note: - No contact block in the center position
- Non-illuminated - Contact blocks and holders must be ordered separately
- Illuminated - Contactor blocks, holder, lamp block and blubs must be ordered separately

触点组件及基座

Contact Blocks and Holders



型号 Type	包括组件 Included blocks	订货代号 Order Code	重量 Weight (kg)
------------	-------------------------	--------------------	-------------------

触点组件

Single contact blocks

MCB-10	1 NO	1SFA 611 610 R1001	0.013
MCB-01	1 NC	1SFA 611 610 R1010	0.013
MCB-10G	1 NO 带镀金触点 with gold plated contacts	1SFA 611 610 R1101	0.013
MCB-01G	1 NC 带镀金触点 with gold plated contacts	1SFA 611 610 R1110	0.013

双触点组件

Double contact block

MCB-20	2 NO	1SFA 611 610 R1002	0.026
MCB-02	2 NC	1SFA 611 610 R1020	0.026
MCB-11	1 NO + 1 NC	1SFA 611 610 R1011	0.026

灯座 - Ba 9底座

Single lamp blocks, Ba 9s base

MLB-1	最大 2 W, 230 V AC 和 DC 的 白炽灯泡或 LED For max. 2 W, 230 V AC and DC filament bulb / LED Light	1SFA 611 620 R1001	0.015
-------	--	--------------------	-------

基座

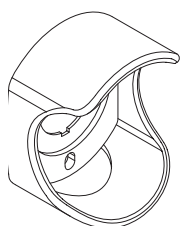
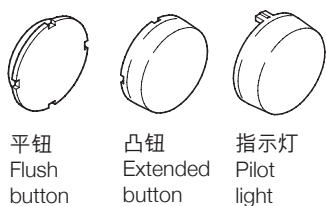
Holders

MCBH-00	一行可带3副触点 (最多两行) For three blocks	1SFA 611 605 R1100	0.006
MCBH5-00	一行可带5副触点 (最多一行) For five blocks	1SFA 611 601 R1100	0.008

组件 Accessories

颜色代码表 Color Code

颜色 Color	型号 Type (■)
红 Red	1
绿 Green	2
黄 Yellow	3
蓝 Blue	4
白 White	5



型号 Type	额定电压 Rated Voltage (AC/DC)	订货代号 Order Code
------------	-------------------------------	--------------------

白炽灯泡 Filament bulbs

M A5-1000	6 V	1SFA 619 925 R1000
M A5-1010	12 V	1SFA 619 925 R1010
M A5-1020	24 V	1SFA 619 925 R1020
M A5-1040	48 V	1SFA 619 925 R1040
M A5-1100	110 V	1SFA 619 925 R1100
M A5-1120	130 V	1SFA 619 925 R1120
M A5-1230 (只适用于AC)	220 V	1SFA 619 925 R1230

LED灯泡 LED bulbs

CA2-202■	24 V
CA2-214■	110-130 V
CA2-222■	220 V

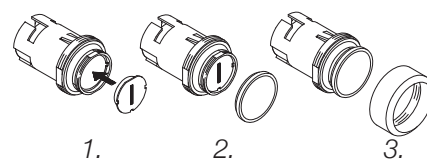
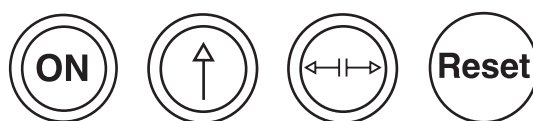
安装工具 Mounting tool

KA1-8037	用来拧紧附件的螺母 Used for tightening the nut of the attachment device in confined spaces	1SFA 616 920 R8037
----------	---	--------------------

换灯工具 Lamp changing tool

KA1-8072	用于LED和灯泡 For LED and for bulbs	1SFA 616 920 R8072
----------	-----------------------------------	--------------------

标识罩 Text caps



* 注：如需以上标牌，请与当地办事处联络
* Please contact ABB office for the above legend plates

金属前圈 (用于操作元件) Metal Bezel (For Operator)

C/M 系列按钮 C系列选择开关	Pushbuttons Type C/M Selector switch Type C	53960483-10 1SFB 539 001 A1017
---------------------	--	-----------------------------------

急停按钮保护罩* Emergency Stop Shroud

CA1-8053	1SFA 619 920 R8053
----------	--------------------

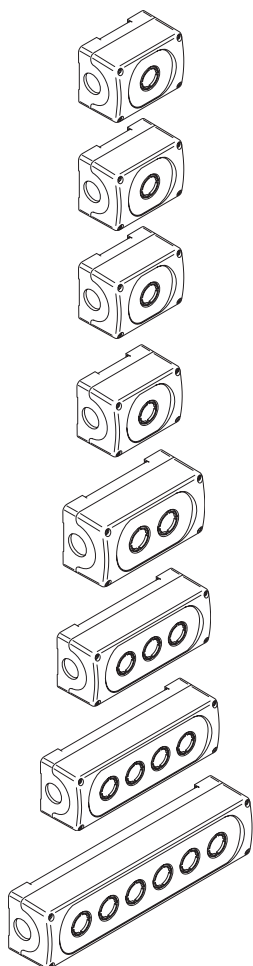
* 只适用于CE型急停按钮

塑料按钮盒 Plastic Enclosure

IP 66 防护等级 Degree of protection IP 66

型号 Type	颜色 (顶 / 底部) Colour (top / bottom)	空位 Size	订货代号 Order Code	重量 Weight (kg)
CEP1-0*	深灰/浅灰 Dark Grey/Light Grey	1位 seat	1SFA 619 811 R1000	
CEPY1-0*	黄/浅灰 Yellow/Light Grey	1位 seat	1SFA 619 821 R1000	
MEP1-0	深灰/浅灰 Dark Grey/Light Grey	1位 seat	1SFA 611 811 R1000	0.15
MEPY1-0	黄/浅灰 Yellow/Light Grey	1位 seat	1SFA 611 821 R1000	0.15
MEP2-0	深灰/浅灰 Dark Grey/Light Grey	2位 seat	1SFA 611 812 R1000	0.17
MEP3-0	深灰/浅灰 Dark Grey/Light Grey	3位 seat	1SFA 611 813 R1000	0.20
MEP4-0	深灰/浅灰 Dark Grey/Light Grey	4位 seat	1SFA 611 814 R1000	0.23
MEP6-0	深灰/浅灰 Dark Grey/Light Grey	6位 seat	1SFA 611 816 R1000	0.30

* CEP1-0 及CEPY1-0 按钮盒只适用于 CE、CP、C2SS、C3SS 和 CL 型按钮 / 指示灯



组件 – 选择开关标牌

Accessories – Legend Plates for Selector Switches

二位置 Two-position

蚀刻固定式标牌 Engraved fixed legend plates

内文 Description	符号/文字 Symbol/text		重量 Weight (kg)
	位置21	位置22	
带符号 ¹⁾ With symbols ¹⁾	○ →	I II →→	0.002 0.002 0.002

带文字 ¹⁾ With text ¹⁾	Hand (手动) Jog (点动) Off (关) Stop (停止)	Auto (自动) Run (运行) On (开) Start (起动)	0.002 0.002 0.002 0.002
--	---	---	----------------------------------

用户自选文字固定式标牌 Fixed legend plates with customer-selected text¹⁾

无标题 Without heading	银灰色铝牌 Silvergrey aluminium 订货时注明 (补充在订货代号之后) When ordering state (in addition to Order Code) : – 最多5个字符 max 5 characters	0.002
------------------------	---	-------

¹⁾ 字高3mm。若未注明，仅首字母大写 Text height 3 mm. Only the initial character is upper case unless other is stated.

三位置 Three-position

蚀刻固定式标牌 Engraved fixed legend plates

内文 Description	符号/文字 Symbol/text			重量 Weight (kg)
	位置31	位置32	位置33	
带符号 ¹⁾ With symbols ¹⁾	I ← →	○ ○ ○	II → →→	0.002 0.002 0.002

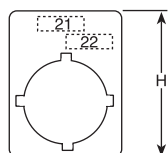
带文字 ¹⁾ With text ¹⁾	Hand (手动) Slow (慢)	○ Off (关)	Auto (自动) Fast (快)	0.002 0.002
--	-----------------------	--------------	-----------------------	----------------

用户自选文字固定式标牌 Fixed legend plates with customer-selected text¹⁾

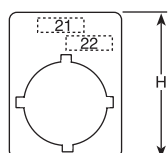
无标题 Without heading	银灰色铝牌 Silvergrey aluminium 订货时注明 (补充在订货代号之后) When ordering state (in addition to Order Code) : – 最多5个字符 max 5 characters	0.002
------------------------	---	-------

¹⁾ 字高3mm。若未注明，仅首字母大写 Text height 3 mm. Only the initial character is upper case unless other is stated.

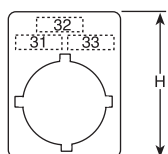
注：如需以上标牌，请与当地办事处联络
Please contact ABB office for the above legend plates



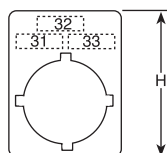
H = 39 mm



H = 39 mm



H = 39 mm

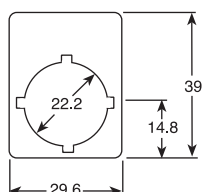


H = 39 mm

组件 – 按钮标牌

Accessories – Legend Plates for Pushbutton

蚀刻固定式标牌 Engraved fixed legend plates



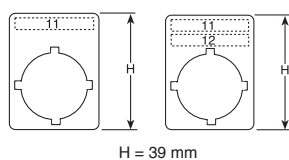
内文 Description	符号/文字 Symbol/text	重量 Weight (kg)	
带符号 ¹⁾ With symbols ¹⁾	O I II ← → →→	0.002 0.002 0.002 0.002 0.002 0.002	
带文字 ¹⁾ With symbols ¹⁾	Close Emergency stop Left On Raise Reset Reverse Right Run Slow Start Stop Up	(关) (紧急停机) (左) (开) (上升) (复位) (退) (右) (运行) (慢) (起动) (停止) (上升)	0.002 0.002 0.002 0.002 0.002 0.002 0.002 0.002 0.002 0.002 0.002 0.002 0.002

¹⁾ 字高 3 mm

¹⁾ Text height 3 mm.

4

附件 Accessories



固定式标牌

(用于按钮，蘑菇钮和指示灯)¹⁾

Fixed legend plates

(for pushbuttons, mushroom buttons and pilot lights)¹⁾

无文字标牌设计

1 - 2行文字

Standard design without text

For 1-2 text lines

0.002

用户自选文字¹⁾

1 行文字

With customer-selected text¹⁾

For 1 text line H = 39 mm

0.002

* 注：如需以上标牌，请与当地办事处联络

* Please contact ABB office for the above legend plates

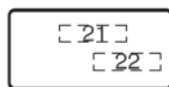
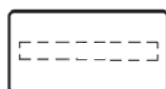
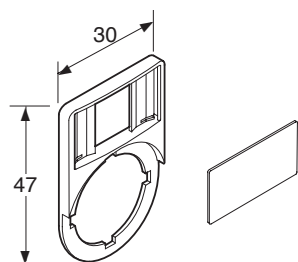
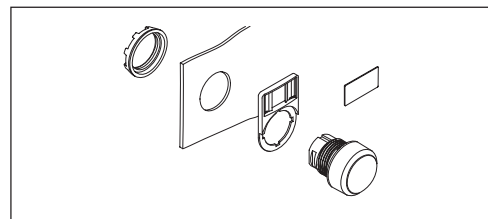
组件 – 特殊标牌 Accessories – Special Legend Plates

标牌套 – 带套件

- 黑色塑料套
- 灰色塑料套 (适用于塑料外壳)
- 安装在黑色塑料板

Legend plate holders with inserts

- Holder of black plastic.
- Holder of grey plastic for plastic enclosures.
- Insert of brushed aluminium on black plastic.



型号 Type	安装在黑色塑料板 (符号 / 文字) Of brushed aluminium on black plastic (With text / symbol)	订货代号 Order Code	重量 Weight (kg)
------------	---	--------------------	-------------------

标牌套 (黑色) Legend plate holder (black)

KAI-8120	黑色 Black	1SFA 616 920 R8120	0.002
----------	----------	--------------------	-------

插卡 Inserts

KAI-8121	不带符号 / 文字 Without text / symbol	1SFA 616 920 R8121	0.001
----------	------------------------------------	--------------------	-------

插卡带标识 Inserts with text/symbol

MA6-1032	O	1SFA 611 930 R1032	0.001
MA6-1033	I	1SFA 611 930 R1033	0.001
MA6-1034	→	1SFA 611 930 R1034	0.001
MA6-1035	→→	1SFA 611 930 R1035	0.001
MA6-1036	Close	1SFA 611 930 R1036	0.001
MA6-1037	Open	1SFA 611 930 R1037	0.001
MA6-1038	On	1SFA 611 930 R1038	0.001
MA6-1039	Off	1SFA 611 930 R1039	0.001
MA6-1040	Fast	1SFA 611 930 R1040	0.001
MA6-1041	Slow	1SFA 611 930 R1041	0.001
MA6-1042	Down	1SFA 611 930 R1042	0.001
MA6-1043	Up	1SFA 611 930 R1043	0.001
MA6-1044	Start	1SFA 611 930 R1044	0.001
MA6-1045	Stop	1SFA 611 930 R1045	0.001

插卡 – 适用于选择开关 Inserts for two-position selector switches

	两面文字 Text on both side			
	位置 21	位置 22		
MA-1070	O	I	1SFA 611 930 R 1070	0.001
MA-1071	I	II	1SFA 611 930 R 1071	0.001
MA-1072	→	→→	1SFA 611 930 R 1072	0.001
MA-1073	Off	On	1SFA 611 930 R 1073	0.001
MA-1074	Stop	Start	1SFA 611 930 R 1074	0.001
MA-1075	Low	High	1SFA 611 930 R 1075	0.001
MA-1076	Slow	Fast	1SFA 611 930 R 1076	0.001
MA-1077	Close	Open	1SFA 611 930 R 1077	0.001
MA-1078	Jog	Run	1SFA 611 930 R 1078	0.001
MA-1079	Hand	Auto	1SFA 611 930 R 1079	0.001

组件 – 特殊标牌 Accessories – Special Legend Plates

型号 Type	安装在黑色塑料板 (符号 / 文字) Of brushed aluminium on black plastic (With text / symbol)	订货代号 Order Code	重量 Weight (kg)
------------	---	--------------------	-------------------

插卡 (适用于三位置选择开关) Inserts for three-position selector switches

	两面文字 Text on both side				
	位置 31	位置 32	位置 33		
MA6-1080	←	O	→	1SFA 611 930 R 1080	0.001
MA6-1081	→	O	→→	1SFA 611 930 R 1081	0.001
MA6-1082	I	O	II	1SFA 611 930 R 1082	0.001
MA6-1083	Hand	O	Auto	1SFA 611 930 R 1083	0.001
MA6-1084	Slow	Off	Fast	1SFA 611 930 R 1084	0.001

插卡 (带指定标识) inserts with customer (selected text/symbols) ¹⁾

MA6-1080	订货时注明在订货号内 位置11或12 - 最多5个字符 位置32 - 最多5个字符 位置21或32 - 最多5个字符 位置22或33 - 最多5个字符 When ordering state (in addition to Order Code) max 5 characters per line max 5 characters per line max 5 characters max 5 characters	1SFA 611 930 R 1090	0.001
----------	---	---------------------	-------

¹⁾ 字高3mm。若未注明，仅首字母大写

Text height 3 mm. Only the initial character is upper case unless other is stated

标牌套 (灰色) 用于塑料外壳 Legend plate holder (grey) for plastic enclosures

MA6-1060	灰 Grey	1SFA 611 930 R1060	0.002
----------	--------	--------------------	-------

插卡 Inserts

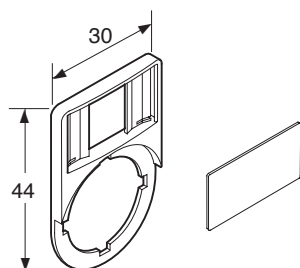
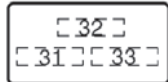
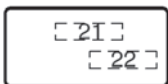
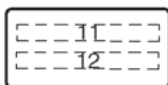
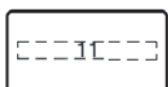
MA 1061	不带符号 / 文字 Without text / symbol	1SFA 611 930 R1061	0.001
---------	------------------------------------	--------------------	-------

插卡带标识 Inserts with text/symbol

MA6-1062	O	1SFA 611 930 R1062	0.001
MA6-1063	I	1SFA 611 930 R1063	0.001
MA6-1064	II	1SFA 611 930 R1064	0.001

急停按钮标牌 Emergency stop legend plates

急停按钮 Emergency Stop	黑字 - 黄色铝片 Black text on a yellow aluminium plate.	SK 615 546-2	0.010
无文字 Without text		SK 615 546-8	0.010



技术数据 – 指示装置

Technical Data – Pilot Devices



认证

按钮、选选择开关和
指示灯均通过下列
机构的国际认证：UL、CE 和 CCC

Approvals

The pushbuttons, selector switches and pilot lights are approved by :
National approval agencies :
UL, CE and China Compulsory Product Certification

标准 Standards

IEC 60947-1, EN 60947-1
IEC 60947-5-1, EN 60947-5-1
IEC 60947-5-5, EN 60947-5-5
IEC 60973, EN 60073
IEC 60529, EN 60529, EN50013, UL508, CSA C22.2 No.14



防护等级 Degrees of protection

操作元件 Operators

	IP	UL/CSA
指示灯 Pilot lights	IP 66	Type 1, 3R, 4, 4X, 12, 13
急停按钮 Emergency stop pushbutton	IP 66	Type 1, 3R, 4, 4X, 12, 13
平钮或凸钮按钮 Pushbutton with flush or extended button	IP 66	Type 1, 3R, 4, 4X, 12, 13
双头按钮 Double pushbutton	IP 66	Type 1, 3R, 4, 4X, 12, 13
蘑菇型按钮，复位型 Mushroom pushbutton, momentary	IP 66	Type 1, 3R, 4, 4X, 12, 13
选择开关 Selector switch	IP 66	Type 1, 3R, 4, 4X, 12, 13
钥匙操作 Key operated selector switch	IP 66	Type 1, 3R, 4, 4X, 12
拨动开关 Toggle switch	IP 66	Type 1, 3R, 4, 4X, 12, 13

触点组件

Contact block IP 20

材料 Material

PC 聚碳酸酯 Polycarbonate	高强度，良好的户外使用特性。可用于弱酸性溶解质、链脂-族烃、链烷烃、酒精、动物性和植物性脂肪的场所 High impact strength, good outdoor resistance. Can withstand light acid solutions, aliphatic hydrocarbons, paraffin, alcohols, animal and vegetable greases.
PA 聚酰胺酮 Polyamide	可用于高温、链脂族烃、芳香烃、氯化烃、酯、酮基醛、酒精和碱性溶解质的场合。 Can withstand high temperatures, aliphatic, aromatic and chlorinated hydro-carbons, esters, ketone-aldehydes, alcohols and basic solutions.
PBT	可在高温、链脂族烃、芳香烃、酸性、碱性溶解质、酒精、油脂的场合中使用。 Can withstand temperature, aliphatic and aromatic hydrocarbons, acids, basic solutions, alcohols, grease and oils
锌 Zinc	在内陆、海域和工业环境中较好的耐腐蚀性。 Good corrosion resistance in inland-, sea and industrial atmosphere.
轻合金 Light-alloy	在内陆、海域和工业环境中较好的耐腐蚀性。 Good corrosion resistance in inland-, sea and industrial atmosphere.

材料和特性

产品中不含破坏臭氧层的物质

Material and characteristics

No ozone depleting substances in the products.

材料 Material¹⁾

	PC	PSU	PA	PBT	Zink	Light-alloy	Rubber Chloro-prene	Nitrile
指示灯 Pilot light	●	-	●	-	-	-	-	●
急停按钮 Emergency stop	●	-	●	●	-	-	●	●
按钮 Pushbutton	●	●	●	●	-	-	●	●
双头按钮 Double pushbutton	●	●	●	-	-	-	-	●
蘑菇型按钮 - 复位型 - momentary	●	●	●	-	-	-	●	●
- 自锁型 - maintained	●	-	●	-	-	-	-	●
选择开关 Selector switch	●	●	●	-	-	-	-	●
拨动开关 Toggle switch	●	-	●	-	-	-	-	●
可锁定式操作元件中的锁 Lock in lockable operators	-	-	-	-	●	-	-	-

¹⁾ 需详细信息请同ABB联系 For detail information please contact ABB

技术数据 – 指示装置

Technical Data – Pilot Devices

适用于 CP、C2SS、C3SS、CE 及 CL 型指示装置

防护等级

操作头部

平钮或凸钮按钮	IP 66
选择开关 C2SS、C3SS	IP 66
急停按钮	IP 66

电气功能元件

平钮或凸钮按钮	IP 20
选择开关	IP 20
急停按钮	IP 20

机械寿命

操作头部

平钮或凸钮按钮	50 万次操作
选择开关	50 万次操作
急停按钮	5 万次操作

温度

工作中环境温度	-25 至 +70 °C
储存温度	-30 至 +85 °C

端子

适用于2号改锥 (+ 字 / - 字型) 及螺钉带DIN垫圈

触点组合

根据 UL, CSA, NEMA 标准的额定值

	C300	R300
额定绝缘电压	250 V	250 V
约定发热电流	2.5 A	1 A
额定工作电流	120 V 240 V	1.5 A 0.75 A

根据 IEC 60947-5-1 标准的额定值

额定绝缘电压 U_i	300 V
约定发热电流 I_{th}	5 A
使用类别 AC 15 下的额定工作电流 I_e , 在	120 V 240 V
	1.5 A 1 A
使用类别 DC 13 下的额定工作电流 I_e , 在	24 V 125 V
	0.3 A 0.2 A

短路保护

短路电流最大值为1kA时, 熔断器	16 A (普通型) 10 A (延时型)
-------------------	--------------------------

Degrees of Protection

Operators

Pushbutton with flush or extended button	IP 66
Selector switch	IP 66
Emergency stop pushbutton	IP 66

Electrical function

Pushbutton with flush or extended button	IP 20
Selector switch	IP 20
Emergency stop pushbutton	IP 20

Mechanical life

Operators

Pushbutton with flush or extended button	500,000 operations
Selector switch	500,000 operations
Emergency stop pushbutton	50,000 operations

Temperature

Ambient temperature during operation	-25 to +70 °C
Storage temperature	-30 to +85 °C

Terminals

Plus-minus pozidrive size 2 screw with DIN-washer.

Contact blocks

Ratings as per UL, CSA, NEMA

	C300	R300
Rated insulation voltage	250 V	250 V
Rated thermal current	2.5 A	1 A
Rated operational current at	120 V 240 V	1.5 A 0.75 A

Ratings as per IEC 60947-5-1

Rated insulation voltage, U_i	300 V
Rated thermal current, I_{th}	5 A
Rated operational current, I_e , utilisation category AC 15, at	120 V 240 V
	1.5 A 1 A
Rated operational current, I_e , utilisation category DC 13, at	24 V 125 V
	0.3 A 0.2 A

Short circuit protection

Max. fuse at 1 kA	16 A (ordinary) 10 A (delayed)
-------------------	-----------------------------------

技术数据 – 指示装置

Technical Data – Pilot Devices

适用于 MP、MPM、MPD、M2SS (K)、M3SS (K) 及 MTS 型指示装置

机械寿命

操作头部

平钮或凸钮按钮和蘑菇型复位按钮	2百万次操作
选择开关，钥匙操作和双头按钮	0.5百万次操作
急停按钮	0.1百万次操作
拨动开关	1百万次操作

温度

工作中环境温度	-25 至 +70 °C
例外：所有应用2 W持续发光的白炽灯的指示装置	-25 至 +40 °C
储存温度	-30 至 +85 °C

端子

适用于2号改锥 (+字 / -字型) 及螺钉带DIN垫圈

接线面积	最小 1 x 0.5 mm ² / AWG20 最大 2 x 2.5 mm ² / 2XAWG14
推荐力矩	0.9 Nm

触点组件

机械寿命	1千万次操作
------	--------

自清洁型触点，NC触点强制断开。电压和电流低于24V和5.6mA时推荐采用两并联触点组件，也可采用镀金触点。

UL、CSA、NEMA 标准的额定值

	A 600		Q 600	
	AC	DC	AC	DC
额定绝缘电压	600 V	600 V	600 V	600 V
约定发热电流	10 A	6 A	2.5 A	0.55 A
额定工作电流在	120 V	6 A	0.55 A	
	240 V	3 A	0.27 A	
			(在250 V)	
	480 V	1.5 A	0.10 A	
	600 V	1.2 A	0.10 A	

IEC 60947-5-1 标准的额定值

额定绝缘电压 U_i	690 V	
约定发热电流 I_{th}	10 A	
使用类别AC 15下的额定工作电流 I_e ，在	120 V	8 A
	230 V	6 A
	400 V	4 A
	690 V	2 A

使用类别DC 13下的额定工作电流 I_e ，在	24 V	5 A
	125 V	1.1 A
	250 V	0.55 A

触点电阻	25 mΩ
------	-------

每个操作头部可带触点组件的最大数量¹⁾

按钮 (复位型 - 不带灯)	6
按钮 (复位型 - 带灯)、拨动开关和蘑菇型按钮	4
按钮 (自锁型)	4
双头按钮、选择开关和钥匙操作和急停按钮	4

¹⁾ 触点组件最多能迭为两层

短路保护

短路电流最大值为1kA时，熔断器	16 A (普通型) 10 A (延时型)
------------------	--------------------------

灯座

IEC 60947-5-1 标准的额定值

额定绝缘电压	230 V
底座	BA 9s
允许功率，高达	2 W

白炽灯工作寿命

不同的工作电压下有相应的工作寿命，亮度和能耗值。一般情况下灯泡在低电压下比在高电压下的亮度高一些，同时抗振动能力更强。

Mechanical life

Operators

Pushbuttons with flush or extended button, momentary mushroom pushbutton	2 million operations
Selector switch, key operated selector switch and double pushbutton	0.5 million operations
Emergency stop pushbutton	0.1 million operations
Toggle switch	1 million operations

Temperature

Ambient temperature during operation	-25 to +70 °C
Exception: All pilot devices with 2 W continuously lit filament bulb	-25 to +40 °C
Storage temperature	-30 to +85 °C

Terminals

Plus-minus pozidrive No.2 screw with DIN-washer.

Connectable area	min. 1 x 0.5 mm ² / AWG 20 max. 2 x 2.5 mm ² / 2XAWG 14
Recommended torque	0.9 Nm

Contact blocks

Mechanical endurance	10 million operations
----------------------	-----------------------

Self cleaning contacts of silver, NC contact with positive opening. At voltages and currents below 24 V and 5.6 mA two contact blocks in parallel are recommended. As an alternative, gold plated contacts can be used.

Ratings as per UL, CSA, NEMA

	A600		Q600	
	AC	DC	AC	DC
Rated insulation voltage	600 V	600 V	600 V	600 V
Rated thermal current	10 A	6 A	2.5 A	0.55 A
Rated operational current at	120 V	6 A	0.27 A (Cat 250)	0.10 A
	240 V	3 A	0.10 A	
	480 V	1.5 A	0.10 A	
	600 V	1.2 A	0.10 A	

Ratings as per IEC 60947-5-1

Rated insulation voltage, U_i	690 V	
Rated thermal current, I_{th}	10 A	
Rated operational current, I_e , utilisation category AC 15, at	120 V	8 A
	230 V	6 A
	400 V	4 A
	690 V	2 A
Rated operational current, I_e , utilisation category DC 13, at	24 V	5 A
	125 V	1.1 A
	250 V	0.55 A

Contact resistance	25 mΩ
--------------------	-------

Max. number of contact blocks per operator¹⁾

Pushbutton (Momentary - Non -illuminated)	6
Pushbutton (Momentary - Illuminated), toggle switch, Mushroom pushbutton	4
Pushbutton (Maintained)	4
Double pushbutton, selector switch and key operated selector switch, emergency stop pushbutton	4

¹⁾ The contact blocks can be stacked in max. two levels

Short circuit protection

Max. fuse at 1 kA	16 A ordinary 10 A delayed
-------------------	-------------------------------

Lamp block

Ratings as per IEC 60947-5-1

Rated insulation voltage	230 V
Base	BA 9s
Permissible power, up to	2 W

Service life of filament bulb

Relative service life, luminous flux and power consumption at different service voltages. It is generally true to say that bulbs for lower voltages give more light and have better vibration-withstand capability than bulbs for higher voltages.

技术数据 – 信号塔 (K70)

Technical Data – Signal Towers

认证 Approvals



技术规范

灯座和附件	聚酰胺，高强度，黑色
灯盖	聚碳酸酯，透明
固定座	底座安装 集线安装，ø 25mm 支架安装
插座	B15d，最大7W的白炽灯泡
连接	2.5mm ² ，螺钉连接
模块数	最大 5
两面安装	最大 10元件

防护等级

灯元件	IP 54	UL 形式5
报警元件	IP 54	UL 形式5

电气参数

常亮元件	12 - 240 V AC/DC		
灯插座 B15d 最大7W	不带灯		
闪光灯元件	24 V AC / DC	115 V AC / DC	230 V AC / DC
起始电流	不带灯 < 0.5 A		
闪光灯元件	24 V DC	115 V AC	230 V AC
闪光频率	1 Hz	1 Hz	1 Hz
闪光能量	2 Ws	2 Ws	2 Ws
持续寿命	4 x 10 ⁶		
电流消耗	125 mA	20 mA	35 mA
AS界面可减少至	80 mA		
起始电流	< 0.5 A (24 V)		
LED常亮元件	24 V AC/DC	115 V AC	230 V AC
电流消耗	45 mA	25 mA	25 mA
起始电流	< 0.5 A (24 V)		
LED闪光灯元件	24 V AC/DC	115 V AC	230 V AC
电流消耗	25 mA	25 mA	25 mA
起始电流	< 0.5 A (24 V)		
闪动频率	c. 1 Hz	c. 1Hz	c. 1 Hz
LED 转换灯元件	24 V, AC / DC		
电流消耗	70 mA		
起始电流	< 0.5 A (24 V)		
转换频率	c. 120 r.p.m.		
温度			
运行环境温度	-20 至 +50 °C		

Technical specifications

Housing and accessories	Polyamide, high impact, black
Dome	Polycarbonate, transparent
Fixing	Base mounting Tube mounting, for tube ø 25 mm Bracket mounting
Socket	B 15 d, for bulb max. 7W
Connection	Screwable connection up to 2.5 mm ²
Number of modules possible	max. 5
-2-sided bracket	max. 10 elements

Degrees of protection

Light elements	IP 54	UL Type 5
Audible elements	IP 54	UL Type 5

Electrical data

Permanent light element	12 - 240 V AC/DC		
Bulb socket B 15 d, max 7 W	Bulb not included		
Blinking light element	24 V AC / DC	115 V AC / DC	230 V AC / DC
Starting current	Bulb not included < 0.5 A		
Flashing light element	24 V DC	115 V AC	230 V AC
Flash frequency	1 Hz	1 Hz	1 Hz
Flash energy	2 Ws	2 Ws	2 Ws
Life duration	4 x 10 ⁶ flashes		
Current consumption	125 mA	20 mA	35 mA
reduced for AS-Interface	80 mA		
Starting current	< 0.5 A (24 V)		
LED Permanent light element	24 V AC/DC	115 V AC	230 V AC
Current consumption	45 mA	25 mA	25 mA
Starting current	< 0.5 A (24 V)		
LED Blinking light element	24 V AC/DC	115 V AC	230 V AC
Current consumption	25 mA	25 mA	25 mA
Starting current	< 0.5 A (24 V)		
Blink frequency	c. 1 Hz	c. 1Hz	c. 1 Hz
LED Rotating light element	24 V, AC / DC		
Current consumption	70 mA		
Starting current	< 0.5 A (24 V)		
Rotation frequency	c. 120 r.p.m.		
Temperature			
Ambient temperature during operations	-20 至 +50 °C		

技术数据 – 信号灯 (KSB)

Technical Data – Signal Beacons

认证 Approvals



技术规范

灯座和附件	PC/ABS混合物，高强度，黑色
灯盖	聚碳酸酯，透明
固定座	ø 37mm安装
灯插座	B15d，最大10W
灯转换	通过插入机构在后面进行 (不含灯)
连接	最大2.5mm ² ，螺钉连接

Technical specifications

Housing and accessories	PC/ABS-Blend, high impact, black
Dome	Polycarbonate, transparent
Fixing	Installation mounting for ø 37 mm
Bulb socket	B 15 d, max. 10 W
Bulb change	via rear access with bayonet mechanism (Bulb not included)
Connection	Screwable connection max. 2.5 mm ²

防护等级

IP65 UL形式5

Degrees of protection

IP 65 UL Type 5

电气参数

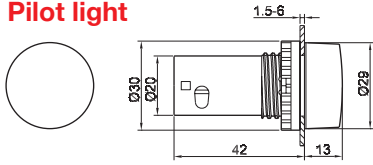
常亮元件			
运行电压	最大250V		
灯插座 B15d 最大10W	不带灯		
LED 常亮灯	24 V AC / DC		
电流消耗	45 mA		
LED 闪光灯元件	24 V AC / DC		
电流消耗	25 mA		
LED 转换灯元件	24 V AC / DC		
电流消耗	70 mA		
起始电流	< 0.5 A		
闪光灯元件			
运行电压	24 V AC / DC	115 V AC	230 V AC
闪光频率	1 Hz	1 Hz	1 Hz
闪光能量	2 Ws	2 Ws	2 Ws
持续寿命	4 x 10 ⁶		
电流消耗	125 mA	20 mA	35 mA
起始电流	< 0.5 A	< 0.5 A	< 0.25 A
温度			
运行环境温度	-20 至 +50 °C		

Electrical data

Permanent light element			
Operating voltage	max. 250 V		
Bulb socket B 15 d, max 10 W	Bulb not included		
LED Permanent light	24 V AC / DC		
Current consumption	45 mA		
LED Blinking light element	24 V AC / DC		
Current consumption	25 mA		
LED Rotating light element	24 V AC / DC		
Current consumption	70 mA		
Starting current	< 0.5 A		
Flashing light element			
Operating voltage	24 V AC / DC	115 V AC	230 V AC
Flash frequency	1 Hz	1 Hz	1 Hz
Flash energy	2 Ws	2 Ws	2 Ws
Life duration	4 x 10 ⁶ flashes		
Current consumption	125 mA	20 mA	35 mA
Starting current	< 0.5 A	< 0.5 A	< 0.25 A
Temperature			
Ambient temperature during operations	-20 至 +50 °C		

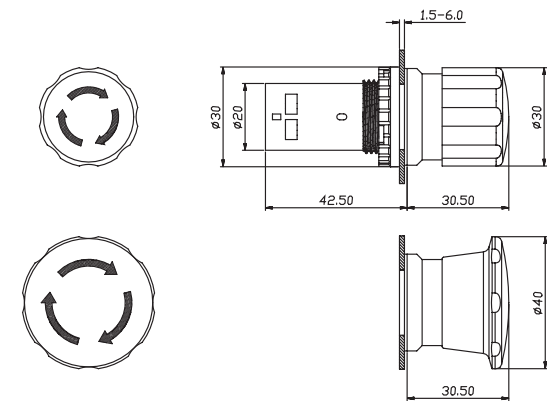
尺寸图 Dimensions (mm)

指示灯 (C L型) Pilot light

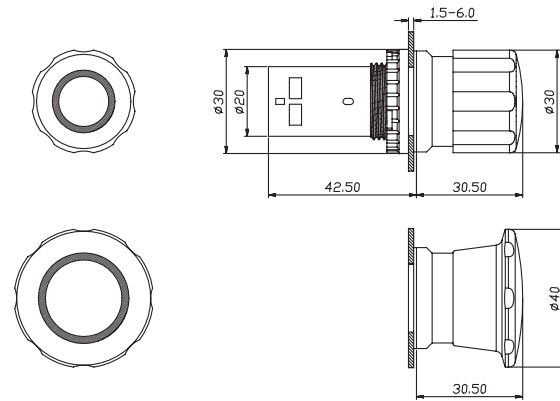


急停按钮 (C E型) Emergency Stop Pushbuttons

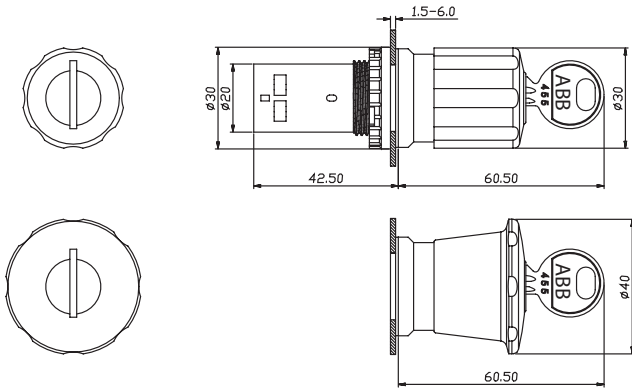
CE3T / CE4T 型 (扭动释放型 Twist Release)



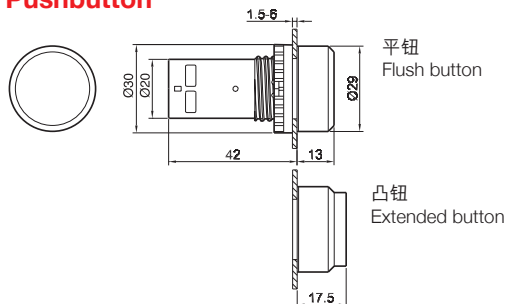
CE3P / CE4P 型 (拉出释放型 Pull Release)



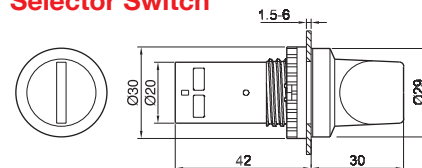
CE3K1 / CE4K1 型 (钥匙释放型 Key Release)



按钮 (C P型) Pushbutton

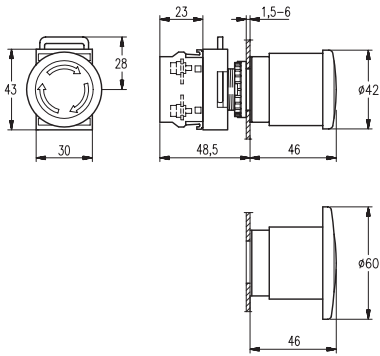


选择开关 (C2SS型 / C3SS型) Selector Switch

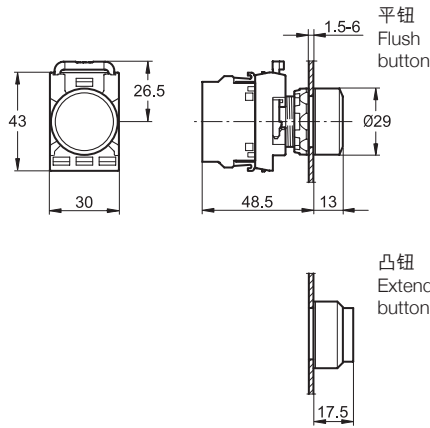


尺寸图 Dimensions (mm)

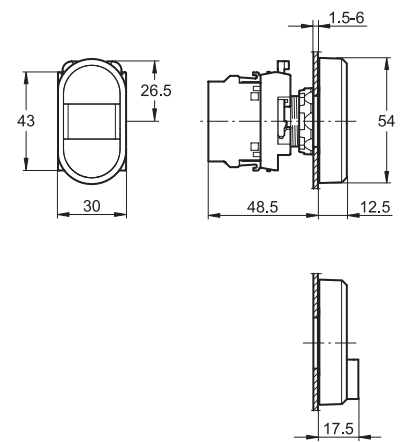
**急停按钮 (M PMT / M PMP型)
(扭动释放型 / 拉出释放型)
Emergency Stop Pushbutton
(Twist Release / Pull Release)**



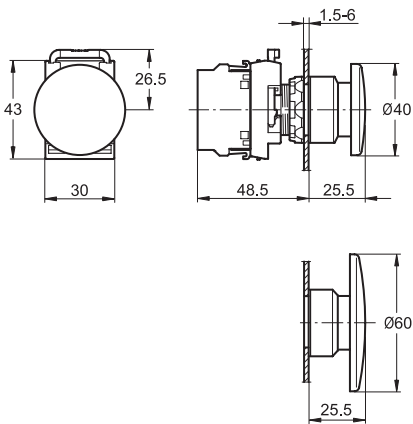
**按钮 (M P型)
Pushbutton**



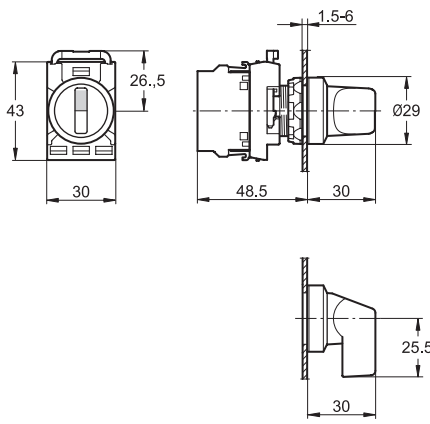
**双头按钮 (M PD型)
Double Pushbutton**



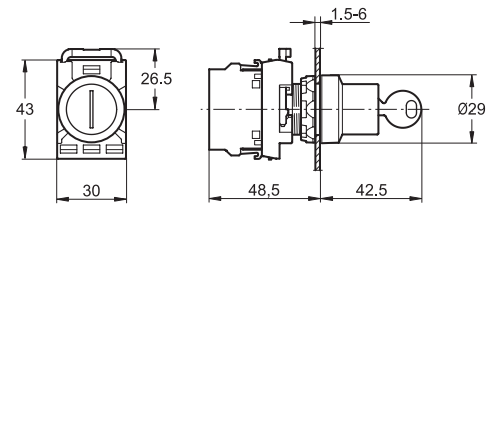
**蘑菇型按钮 (M PM型)
Mushroom Pushbutton**



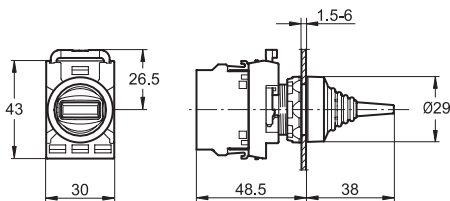
**选择开关 (M 2SS / M 3SS型)
Selector Switch**



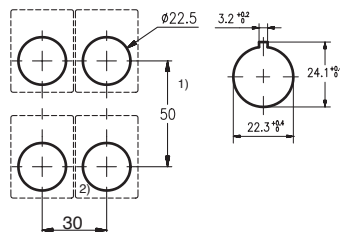
**钥匙操作 (M 2SSK / M 3SSK型)
Key-operated Selector Switch**



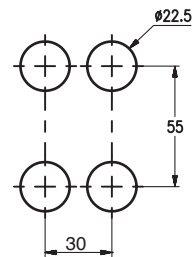
**拨动开关 (M TS)
Toggle Switch**



**按钮、指示灯和开关安装钻孔图
Drilling plans for pushbuttons,
switches and pilot lights**



**双头按钮安装钻孔图
Drilling plan for
double pushbutton**

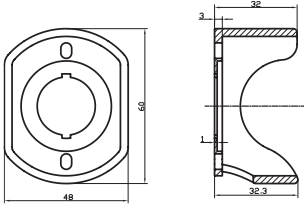


¹⁾ D=60 mm 的蘑菇型按钮时为 61 mm
61 mm for mushroom pushbutton with D=60 mm

²⁾ 如采用插片式标牌时为 37 mm
37 mm when legend plate with insert is used.

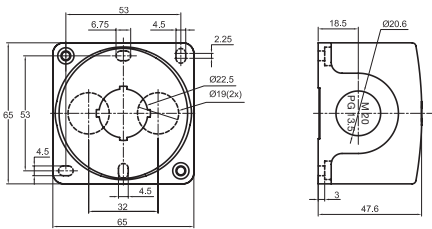
尺寸图 Dimensions (mm)

急停按钮保护罩 Emergency Stop Shroud

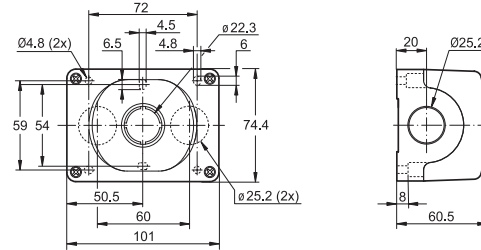


塑料按钮盒 Plastic enclosures

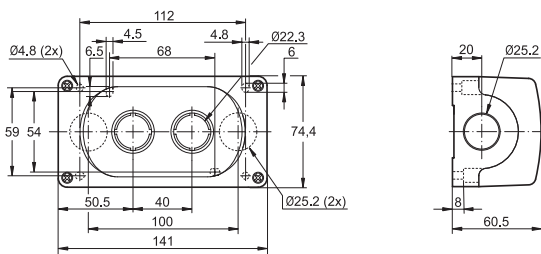
1 位 seat (CEP1-0 / CEPY1-0)



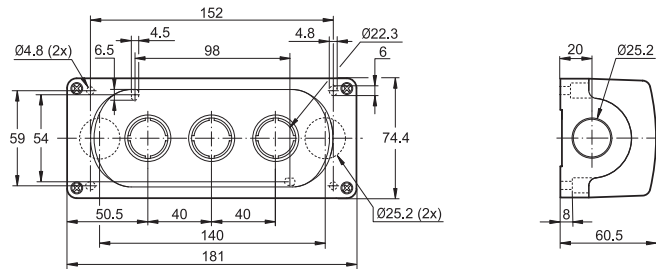
1 位 seat (MEP1-0 / MEPY1-0)



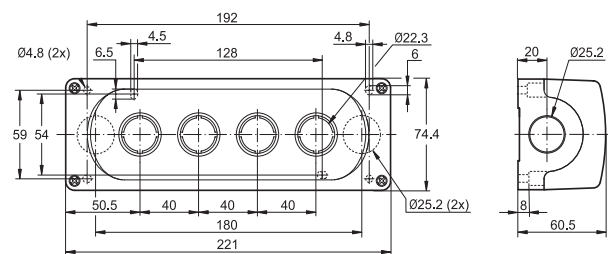
2 位 seats



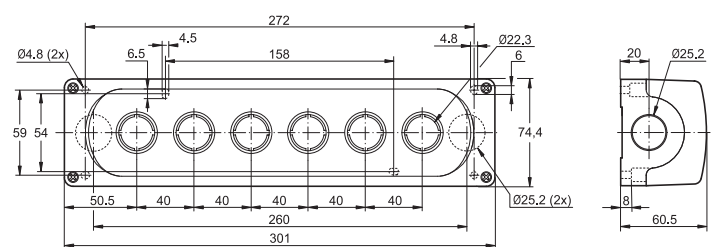
3 位 seats



4 位 seats



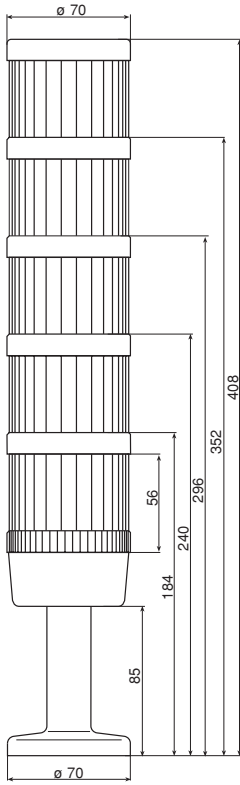
6 位 seats



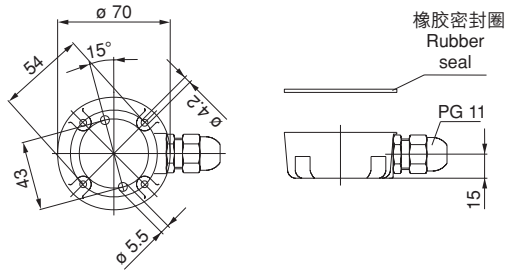
尺寸图 - 信号塔 / 信号灯

Dimensions - Signal Towers/Signal Beacons

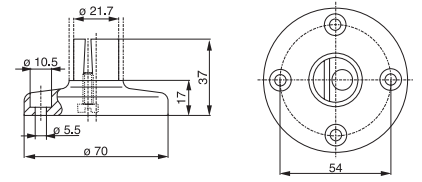
K 70 信号塔 Signal Towers



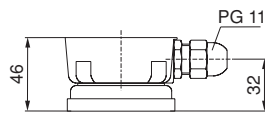
触点盒 (旁出线) Contact box for cable exit at side



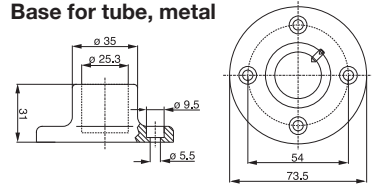
适用于集线管底座 (塑料) Base for tube, plastic



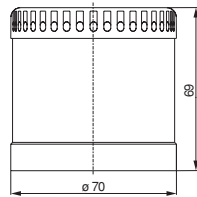
触点盒 (磁性底座) Contact box with magnetic base



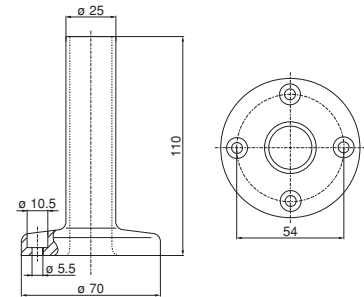
适用集线管底座 (金属) Base for tube, metal



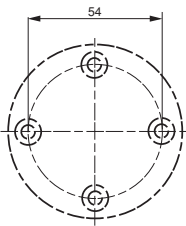
发声元器件 Audible module



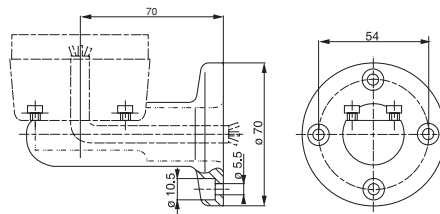
带集线管底座 Base with integrated tube



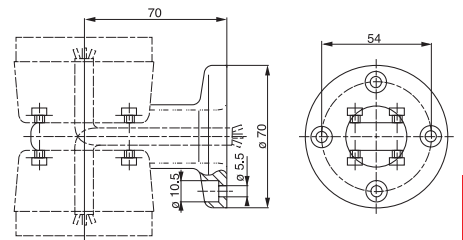
K 70 信号塔安装开孔图 Drilling plan for Signal Towers



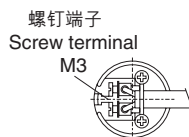
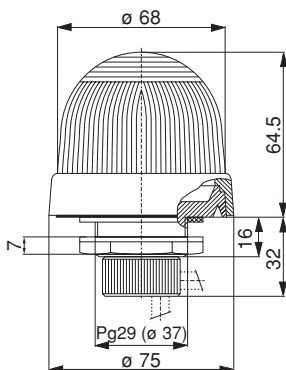
支架 (单面安装) Bracket 1-sided mounting



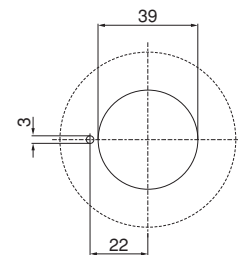
支架 (两面安装) Bracket 2-sided mounting



K SB 信号灯 Signal Beacons



K SB 信号灯安装开孔图 Drilling plan for Signal Beacons



颜色选择

Colour Selection

颜色选择根据 IEC 73, 第 4 版, 1991

IEC 73 中规定了按钮和指示灯的颜色，并推荐了各颜色的使用，如下为标准的摘录

Colour selection according to IEC 73, edition 4, 1991

IEC 73 specifies colours for pushbuttons and pilot lights and gives recommendations regarding the use of colours. An excerpt from the standards is given below.

颜色 Colour	按钮/含意 Pushbutton/Meaning	指示灯/含意 Pilot lights/Meaning
红 RED	紧急 Emergency	紧急或危险 Emergency or danger
黄 YELLOW	异常 Abnormal.	异常或警告 Abnormal or warning
绿 GREEN	安全 Safety	正常或安全 Normal or safety
蓝 BLUE	预设 Prescribed	预设或强制性 Prescribed or obligatory
白、灰、黑 WHITE, GREY, BLACK	未有特别规定 No special meaning prescribed	未有特别规定 No special meaning prescribed

按钮

急停按钮即使同Off组合时也应**为红色**。

停止及关机按钮可为白色、灰色或黑色，推荐采用**黑色**，也可用红色。

启动及开机按钮可为白色、灰色或黑色，推荐采用**白色**，也可用绿色。

启停组合按钮可为白色、灰色或黑色，**不可使用黄色、绿色或红色**。

带灯型按钮

红色紧急按钮必须在操作元件本体上，同传输光源无关。

其它功能见“按钮”，如在无特定要求的情况下，应采用**白色**（中性色）。

指示灯

指示灯颜色如上表所示，如有疑问，采用**白色**（中性色）。

Pushbuttons

Emergency, even in combination with **Off**, is to be **RED**.

Stop and Off can be white, grey or black, with preference for **BLACK**. Red is also allowed.

Start and On can be white, grey or black, with preference for **WHITE**. Green is also allowed.

Start and stop in combination can be white, grey or black. Yellow, green or red **must not** be used.

Reset is to be blue, white, grey or black, with preference for **BLUE**.

Reset with stop function can be white, grey or black, with preference for **BLACK**. Red is also allowed.

Illuminated pushbuttons

The red colour of **Emergency** must be on the operator itself and is not to be dependent on transmitted light. For other functions, see **Pushbuttons**. When in doubt, use white (neutral).

Pilot lights

Pilot lights are to be given colours according to the table above. When in doubt, use white (neutral).

选型指引 – 完整的操作元件

Explanation of Type Designation

完整的操作元件 (不带灯型 Non-illuminated)

例 Example :

C P1-10Y - 10

10 = 1NO	01 = 1NC	11 = NO+NC	20 = 2NO	02 = 2NC
R = 红色 Red	G = 绿色 Green	Y = 黄色 Yellow		
L = 蓝色 Blue	W = 白色 White	B = 黑色 Black		
C = 透明 Clear				
0 = 不带灯型 Non-illuminated				
1 = 塑料圈 Plastic Bezel		3 = 金属圈 Metal Bezel		
L	指示灯	Pilot Light		
E3T	急停按钮 (扭动释放 Ø30mm)	Emergency Stop Pushbutton (Twist release Ø30mm)		
E4T	急停按钮 (扭动释放 Ø40mm)	Emergency Stop Pushbutton (Twist release Ø40mm)		
E3P	急停按钮 (拉出释放 Ø30mm)	Emergency Stop Pushbutton (Pull release Ø30mm)		
E4P	急停按钮 (拉出释放 Ø40mm)	Emergency Stop Pushbutton (Pull release Ø40mm)		
E3K1	急停按钮 (钥匙释放 Ø30mm)	Emergency Stop Pushbutton (Key release Ø30mm)		
E4K1	急停按钮 (钥匙释放 Ø40mm)	Emergency Stop Pushbutton (Key release Ø40mm)		
P1	平钮复位型按钮	Flush Momentary Pushbutton		
P2	平钮自锁型按钮	Flush Maintained Pushbutton		
P3	凸钮复位型按钮	Extended Momentary Pushbutton		
P4	凸钮自锁型按钮	Extended Maintained Pushbutton		
2SS1	二位置选择开关 (短手柄, 自锁型 – 在B和C位)	2-Position Selector Switch (Short Handle, Maintained - B & C)		
2SS2	二位置选择开关 (短手柄, 自锁型 – 在A和C位)	2-Position Selector Switch (Short Handle, Maintained - A & C)		
2SS3	二位置选择开关 (短手柄, 复位型 – 由C至B位)	2-Position Selector Switch (Short Handle, Momentary - C to B)		
3SS1	三位置选择开关 (短手柄, 自锁型 – 在A、B和C位)	3-Position Selector Switch (Short Handle, Maintained - A, B & C)		
3SS2	三位置选择开关 (短手柄, 复位型 – 由A至B和C至B位)	3-Position Selector Switch (Short Handle, Momentary - A to B & C to B)		
3SS3	三位置选择开关 (短手柄, 复位型 – 由C至B位)	3-Position Selector Switch (Short Handle, Momentary - C to B)		
3SS7	三位置选择开关 (短手柄, 复位型 – 由A至B位)	3-Position Selector Switch (Short Handle, Momentary - A to B)		

选型指引 – 完整的操作元件

Explanation of Type Designation

完整的操作元件 (不带灯型 Non-illuminated / 带灯型 Illuminated)

例 Example :

M P1-42 R - 11

触点组件 Contact Blocks	10 = 1NO 01 = 1NC 11 = NO+NC 20 = 2NO 02 = 2NC
按钮颜色 (不适用于钥匙开关) Colour (Not for key-operated selected switch)	R = 红色 Red G = 绿色 Green Y = 黄色 Yellow L = 蓝色 Blue W = 白色 White B = 黑色 Black C = 透明 Clear
钥匙代号 (只适用于钥匙开关) Key Code (For key-operated selected switch only) ■ :	1 = 71 2 = 72 3 = 73
	0 = 不带灯型 Non-illuminated 2 = 带灯型 (不适用于钥匙开关) Illuminated (Not for key-operated selected switch)
	4 = 塑料圈 Plastic Bezel 6 = 金属圈 Metal Bezel
P1	平钮复位型按钮 Flush Momentary Pushbutton
P2	平钮自锁型按钮 Flush Maintained Pushbutton
P3	凸钮复位型按钮 Extended Momentary Pushbutton
P4	凸钮自锁型按钮 Extended Maintained Pushbutton
2SS1	二位置选择开关 (短手柄, 自锁型 – 在B和C位) 2-Position Selector (Short Handle, Maintained – B & C)
2SS2	二位置选择开关 (短手柄, 自锁型 – 在A和C位) 2-Position Selector (Short Handle, Maintained – A & C)
2SS3	二位置选择开关 (短手柄, 复位型 – 由C至B位) 2-Position Selector (Short Handle, Momentary – C to B)
3SS1	三位置选择开关 (短手柄, 自锁型 – 在A、B和C位) 3-Position Selector Switch (Short Handle, Maintained - A, B & C)
3SS2	三位置选择开关 (短手柄, 复位型 – 由A至B和C至B位) 3-Position Selector Switch (Short Handle, Momentary - A to B & C to B)
3SS3	三位置选择开关 (短手柄, 复位型 – 由C至B位) 3-Position Selector Switch (Short Handle, Momentary - C to B)
3SS7	三位置选择开关 (短手柄, 复位型 – 由A至B位) 3-Position Selector Switch (Short Handle, Momentary - A to B)
2SSK1	二位置钥匙开关 (自锁型 – 在B和C位均可取出钥匙) 2-Position Key-operated (Maintained – key can be moved in B & C)
2SSK2	二位置钥匙开关 (自锁型 – 仅在B位取出钥匙) 2-Position Key-operated (Maintained – key can be moved in B)
2SSK3	二位置钥匙开关 (复位型 – 仅在B位取出钥匙) 2-Position Key-operated (Momentary – key can be moved in B)
3SSK1	三位置钥匙开关 (自锁型 – 在A、B和C位均可取出钥匙) 3-Position Key-operated (Maintained – key can be moved in A, B & C)
3SSK2	三位置钥匙开关 (自锁型 – 仅在B位取出钥匙) 3-Position Key-operated (Maintained – key can be moved in B)
3SSK3	三位置钥匙开关 (复位型 – 仅在B位取出钥匙) 3-Position Key-operated (Momentary – key can be moved in B)
3SSK4	三位置钥匙开关 (复位型 – 仅在A位取出钥匙) 3-Position Key-operated (Momentary – key can be moved in A)
3SSK5	三位置钥匙开关 (复位型 – 在A、B和C位均可取出钥匙) 3-Position Key-operated (Momentary – key can be moved in A, B & C)
TS1	二位置拨动开关 (自锁型) 2-Position Toggle operated (Maintained)
TS2	三位置拨动开关 (复位型 – 由A至B和C至B位) 3-Position Toggle operated (Momentary – A to B & C to B)
TS3	三位置拨动开关 (自锁型 – 在A、B和C位) 3-Position Toggle operated (Maintained – A, B & C)

完整的操作元件 (双头按钮 Double Pushbuttons)

例 Example :

M PD 1-22 R - 11

触点组件 Contact Blocks	10 = 1NO 01 = 1NC 11 = NO+NC 20 = 2NO 02 = 2NC
镜片颜色 Lens Colour	R = 红色 Red G = 绿色 Green Y = 黄色 Yellow B = 黑色 Black C = 透明 Clear
	1 = 不带灯型 Non-illuminated 2 = 带灯型 Illuminated
	2 = 塑料圈 Plastic Bezel
按钮颜色及标识 Button Colour and Text	
双头按钮	Pushbutton, D ouble (Flush Buttons)

选型指引 – 操作头部

Explanation of Type Designation

操作头部 Operators (不带灯型 Non-illuminated / 带灯型 Illuminated)

例 Example 1 :

M PM1-10Y

按钮颜色 / 双头按钮镜片颜色

Button Colour / Lens Colour for Double Pushbuttons

R = 红色 Red Y = 黄色 Yellow W = 白色 White C = 透明 Clear
G = 绿色 Green L = 蓝色 Blue B = 黑色 Black

0 = 不带灯型 Non-illuminated 1 = 带灯型 Illuminated

1 = 塑料圈 Plastic Bezel 3 = 金属圈 Metal Bezel

PMT3	急停按钮 (扭动释放型Ø40)	Emergency Stop Pushbutton (Twist release Ø40)
PMT4	急停按钮 (扭动释放型Ø60)	Emergency Stop Pushbutton (Twist release Ø60)
PMP3	急停按钮 (拉出释放型Ø40)	Emergency Stop Pushbutton (Pull release Ø40)
PMP4	急停按钮 (拉出释放型Ø60)	Emergency Stop Pushbutton (Pull release Ø60)
P1	平钮复位型按钮	Flush Momentary Pushbutton
P2	平钮自锁型按钮	Flush Maintained Pushbutton
P3	凸钮复位型按钮	Extended Momentary Pushbutton
P4	凸钮自锁型按钮	Extended Maintained Pushbutton
PD1-19	双头按钮颜色及标识	Pushbutton, Double (Colour and Text)
PM1	蘑菇型按钮 (复位型 Ø40)	Pushbutton, Mushroom (Momentary Ø40)
PM2	蘑菇型按钮 (复位型 Ø60)	Pushbutton, Mushroom (Momentary Ø60)
2SS1	二位置选择开关 (短手柄, 自锁型 – 在B和C位)	2-Position Selector Switch (Short Handle, Maintained - B & C)
2SS2	二位置选择开关 (短手柄, 自锁型 – 在A和C位)	2-Position Selector Switch (Short Handle, Maintained - A & C)
2SS3	二位置选择开关 (短手柄, 复位型 – 由C至B位)	2-Position Selector Switch (Short Handle, Momentary - C to B)
2SS4	二位置选择开关 (长手柄, 自锁型 – 在B和C位)	2-Position Selector Switch (Long Handle, Maintained - B & C)
2SS5	二位置选择开关 (长手柄, 自锁型 – 在A和C位)	2-Position Selector Switch (Long Handle, Maintained - A & C)
2SS6	二位置选择开关 (长手柄, 复位型 – 由C至B位)	2-Position Selector Switch (Long Handle, Momentary - C to B)
3SS1	三位置选择开关 (短手柄, 自锁型 – 在A、B和C位)	3-Position Selector Switch (Short Handle, Maintained - A, B & C)
3SS2	三位置选择开关 (短手柄, 复位型 – 由A至B和C至B位)	3-Position Selector Switch (Short Handle, Momentary - A to B & C to B)
3SS3	三位置选择开关 (短手柄, 复位型 – 由C至B位)	3-Position Selector Switch (Short Handle, Momentary - C to B)
3SS4	三位置选择开关 (长手柄, 自锁型 – 在A、B和C位)	3-Position Selector Switch (Long Handle, Maintained - A, B & C)
3SS5	三位置选择开关 (长手柄, 复位型 – 由A至B和C至B位)	3-Position Selector Switch (Long Handle, Momentary - A to B & C to B)
3SS6	三位置选择开关 (长手柄, 复位型 – 由C至B位)	3-Position Selector Switch (Long Handle, Momentary - C to B)
3SS7	三位置选择开关 (短手柄, 复位型 – 由A至B位)	3-Position Selector Switch (Short Handle, Momentary - A to B)
3SS8	三位置选择开关 (长手柄, 复位型 – 由A至B位)	3-Position Selector Switch (Long Handle, Momentary - A to B)

例 Example 2 :

M 2SSK1 - 10 ■

钥匙代号 Key Code ■ :

1 = 71 2 = 72 3 = 73

1 = 塑料圈 Plastic Bezel 3 = 金属圈 Metal Bezel

2SSK1	二位置钥匙开关 (自锁型 – 在B和C位均可取出钥匙)	2-Position Key-Operated (Maintained – key can be moved in B & C)
2SSK2	二位置钥匙开关 (自锁型 – 仅在B位取出钥匙)	2-Position Key-Operated (Maintained – key can be moved in B)
2SSK3	二位置钥匙开关 (复位型 – 仅在B位取出钥匙)	2-Position Key-Operated (Momentary – key can be moved in B)
3SSK1	三位置钥匙开关 (自锁型 – 在A、B和C位均可取出钥匙)	3-Position Key-Operated (Maintained – key can be moved A, B & C)
3SSK2	三位置钥匙开关 (自锁型 – 仅在B位取出钥匙)	3-Position Key-Operated (Maintained – key can be moved in B)
3SSK3	三位置钥匙开关 (复位型 – 仅在B位取出钥匙)	3-Position Key-Operated (Momentary – key can be moved in B)
3SSK4	三位置钥匙开关 (复位型 – 仅在A位取出钥匙)	3-Position Key-Operated (Momentary – key can be moved in A)
3SSK5	三位置钥匙开关 (复位型 – 在A、B、C位均可取出钥匙)	3-Position Key-Operated (Momentary – key can be moved in A, B to C)



样本所載述的产品资料以实物为准，若有变更恕不另行通知，ABB (中国) 有限公司拥有最终解释权。

1SXF150002C2907
01-2007 CHM 5935